

PARTS MANUAL



MODELS **WBH-16** **WBH-16E** **WBH-16F** **WBH-16EF** **POWER BUGGY**

**(HONDA GX390RT2QTT RECOIL START
GX390RT2QNB2 ELECTRIC START GASOLINE ENGINES)**

Revision #8 (03/29/24)

To find the latest revision of this publication or
associated operation manual, visit our website
at: www.multiquip.com



THIS MANUAL MUST ACCOMPANY THE EQUIPMENT AT ALL TIMES.

WBH-16 Series Power Buggy

| | |
|--|---|
| Explanation Of Code In Remarks Column..... | 4 |
| Suggested Spare Parts | 5 |

Component Drawings

| | |
|--|-------|
| Nameplate And Decals Assembly..... | 6–7 |
| Hydraulic Drive 1 Assembly..... | 8–11 |
| Hydraulic Drive 2 Assembly..... | 12–15 |
| Eaton Hydraulic Pump Assembly | 16–17 |
| Hydro-Gear Hydraulic Pump Assembly | 18–19 |
| Hydraulic Dump Assembly..... | 20–21 |
| Eaton Pump And Coupling Assembly | 22–23 |
| Hydro-Gear Pump And Coupling Assembly..... | 24–25 |
| Tub Assembly | 26–27 |
| Panel Assembly | 28–29 |
| Brake Assembly | 30–31 |
| Steering And Controls Assembly | 32–33 |
| Chassis Assembly | 34–35 |
| Handle/Foot Dump Controls Assembly..... | 36–37 |
| Hydraulic Oil Tank Assembly | 38–39 |
| Battery Assembly | 40–41 |
| Fuel Tank Assembly (Steel)..... | 42–43 |
| Fuel Tank Assembly (Plastic)..... | 44–45 |
| Engine Mounting Assembly | 46–47 |
| Engine Assembly | 48–49 |
| Engine Service Parts | 50–51 |

NOTICE

Specifications and part numbers are subject to change without notice.

NOTES

[illegible]

EXPLANATION OF CODE IN REMARKS COLUMN

The following section explains the different symbols and remarks used in the Parts section of this manual. Use the help numbers found on the back page of the manual if there are any questions.

NOTICE

The contents and part numbers listed in the parts section are subject to change **without notice**. Multiquip does not guarantee the availability of the parts listed.

SAMPLE PARTS LIST

| NO. | PART NO. | PART NAME | QTY. | REMARKS |
|-----|----------|---------------------|------|---------------------|
| 1 | 12345 | BOLT..... | 1 | INCLUDES ITEMS W/% |
| 2% | | WASHER, 1/4 IN..... | | NOT SOLD SEPARATELY |
| 2% | 12347 | WASHER, 3/8 IN.... | 1 | MQ-45T ONLY |
| 3 | 12348 | HOSE | | A/R ...MAKE LOCALLY |
| 4 | 12349 | BEARING | 1 | S/N 2345B AND ABOVE |

NO. Column

Unique Symbols — All items with same unique symbol

(@, #, +, %, or >) in the number column belong to the same assembly or kit, which is indicated by a note in the “Remarks” column.

Duplicate Item Numbers — Duplicate numbers indicate multiple part numbers, which are in effect for the same general item, such as different size saw blade guards in use or a part that has been updated on newer versions of the same machine.

NOTICE

When ordering a part that has more than one item number listed, check the remarks column for help in determining the proper part to order.

PART NO. Column

Numbers Used — Part numbers can be indicated by a number, a blank entry, or TBD.

TBD (To Be Determined) is generally used to show a part that has not been assigned a formal part number at the time of publication.

A blank entry generally indicates that the item is not sold separately or is not sold by Multiquip. Other entries will be clarified in the “Remarks” Column.

QTY. Column

Numbers Used — Item quantity can be indicated by a number, a blank entry, or A/R.

A/R (As Required) is generally used for hoses or other parts that are sold in bulk and cut to length.

A blank entry generally indicates that the item is not sold separately. Other entries will be clarified in the “Remarks” Column.

REMARKS Column

Some of the most common notes found in the “Remarks” Column are listed below. Other additional notes needed to describe the item can also be shown.

Assembly/Kit — All items on the parts list with the same unique symbol will be included when this item is purchased.

Indicated by:

“INCLUDES ITEMS W/(unique symbol)”

Serial Number Break — Used to list an effective serial number range where a particular part is used.

Indicated by:

“S/N XXXXX AND BELOW”

“S/N XXXX AND ABOVE”

“S/N XXXX TO S/N XXX”

Specific Model Number Use — Indicates that the part is used only with the specific model number or model number variant listed. It can also be used to show a part is NOT used on a specific model or model number variant.

Indicated by:

“XXXXX ONLY”

“NOT USED ON XXXX”

“Make/Obtain Locally” — Indicates that the part can be purchased at any hardware shop or made out of available items. Examples include battery cables, shims, and certain washers and nuts.

“Not Sold Separately” — Indicates that an item cannot be purchased as a separate item and is either part of an assembly/kit that can be purchased, or is not available for sale through Multiquip.

SUGGESTED SPARE PARTS

WBH16 SERIES POWER BUGGY

1 to 3 units

| Qty. | P/N | Description |
|--------|--------------|--------------------------------|
| 1..... | 508667..... | FILTER, HYDRAULIC OIL |
| 1..... | EM16477..... | CAP, HYDRAULIC OIL TANK |
| 1..... | 18035..... | PUMP, HYDRAULIC |
| 1..... | 18051..... | COUPLING, EATON ENGINE/PUMP |
| 1..... | 808658C..... | COUPLING, HYDRO GEAR/PUMP |
| 2..... | 512881..... | BRAKE BAND ASSY. |
| 1..... | 18145..... | ROD, BRAKE CONTROL |
| 1..... | 18166..... | CAP, FUEL (NON EPA, 4-IN) |
| 1..... | 520820..... | CAP, FUEL (EPA, 2-IN) |
| 5..... | EM20763..... | FILTER, IN-LINE FUEL |
| 1..... | 18131..... | SWITCH, KILL |
| 1..... | 18133..... | CABLE, THROTTLE |
| 1..... | 18132..... | LEVER, THROTTLE |
| 1..... | 18029..... | WHEEL, DRIVE, PNEUMATIC |
| 1..... | 18029F..... | WHEEL, DRIVE, FOAM |
| 1..... | 18049..... | WHEEL, STRG., PNEU. |
| 1..... | 18049F..... | WHEEL, STEERING, FOAM |

NOTICE

Part numbers on this Suggested Spare Parts list may supersede/replace the part numbers shown in the following parts lists.

ENGINE HONDA GX390RT2QTT (RECOIL START)

1 to 3 units

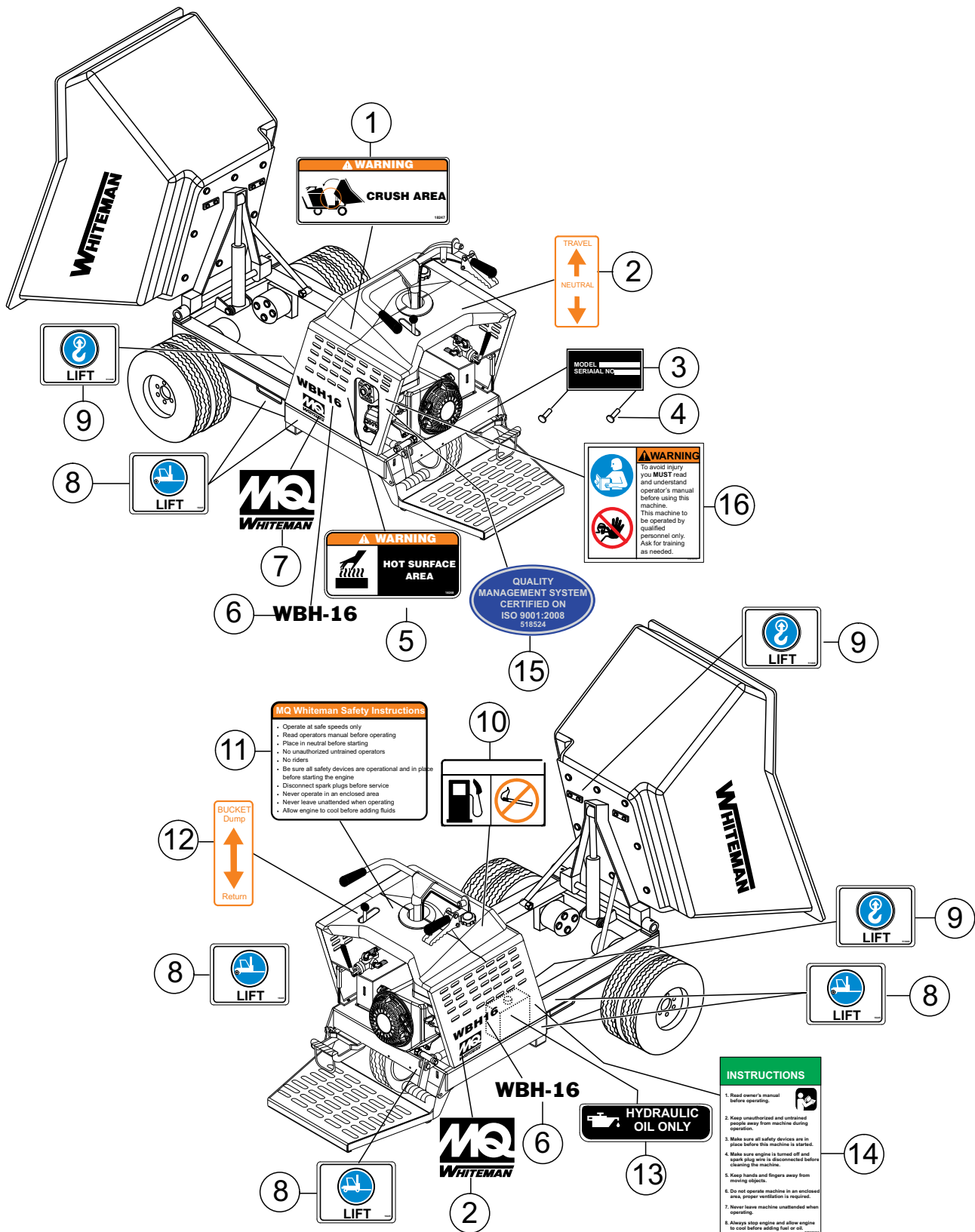
| Qty. | P/N | Description |
|--------|-------------------|----------------------|
| 3..... | 9807955846..... | SPARK PLUG |
| 3..... | 11078..... | KEY, IGNITION SWITCH |
| 3..... | 828461Z5T305..... | GRIP, STARTER |
| 1..... | 28462ZE3W01..... | ROPE, STARTER |
| 3..... | 17210ZE3010..... | AIR FILTER, ELEMENT |
| 3..... | 17218ZE3000..... | AIR FILTER, OUTER |

ENGINE HONDA GX390RT2QNB2 (ELECTRIC START)

1 to 3 units

| Qty. | P/N | Description |
|--------|------------------|--------------------------|
| 3..... | 9807955846..... | SPARK PLUG |
| 3..... | 11078..... | KEY, IGNITION SWITCH |
| 3..... | 17210ZE3505..... | AIR FILTER, ELEM. (DUAL) |
| 3..... | 17218ZE3505..... | AIR FILTER, OUTER |

NAMEPLATE AND DECALS ASSY.

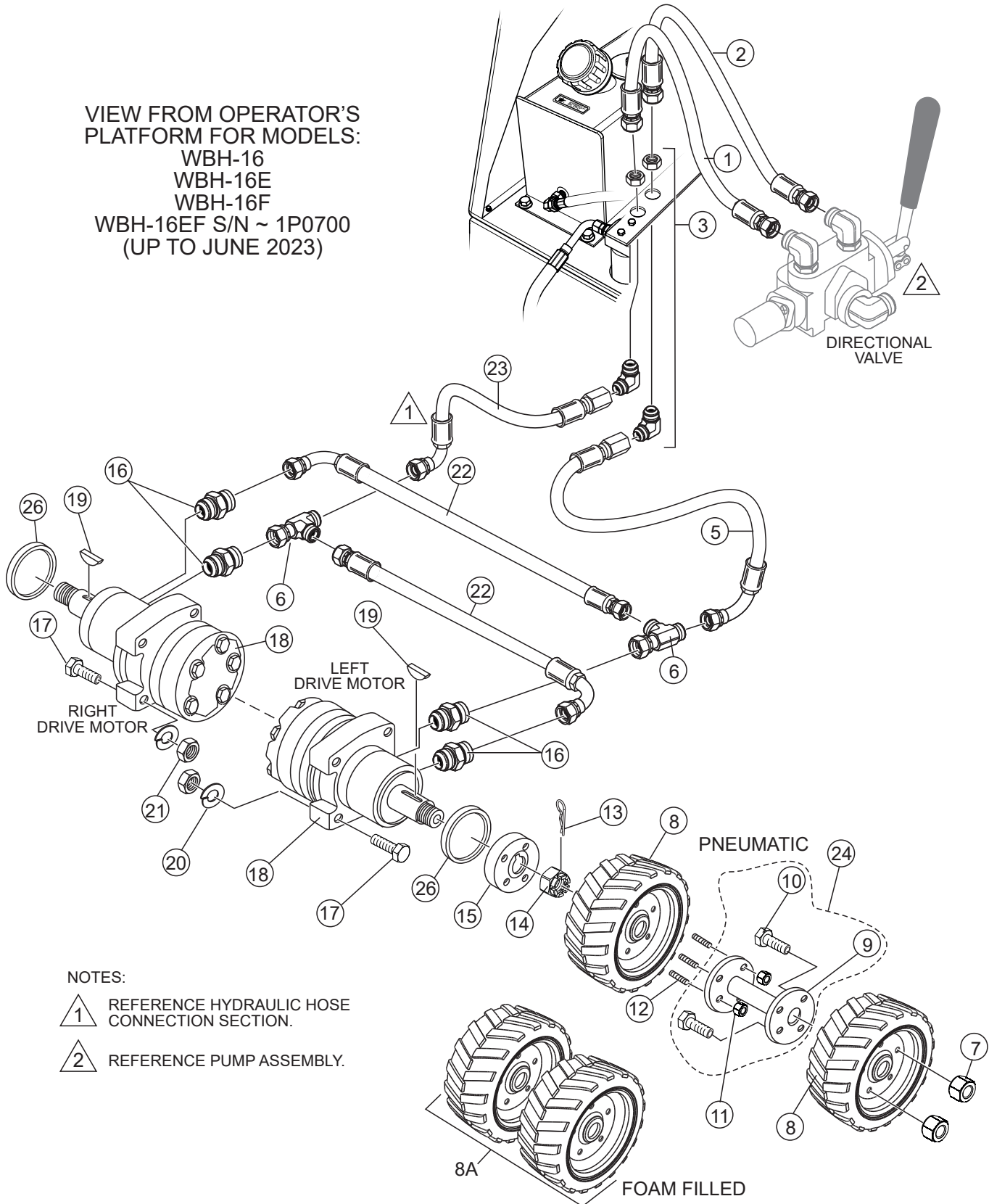


NAMEPLATE AND DECALS ASSY.

| <u>NO.</u> | <u>PART NO.</u> | <u>PART NAME</u> | <u>QTY.</u> | <u>REMARKS</u> |
|------------|-----------------|--|-------------|-----------------------------|
| 1 | 18247 | DECAL, CRUSH WARNING | 1 | |
| 2 | | DECAL, TRAVEL LEVER DIRECTION | 1..... | MOLDED INTO FUEL TANK COVER |
| 3 | | PLATE, SERIAL NUMBER..... | 1..... | CONTACT MQ PARTS DEPT. |
| 4 | 491757 | RIVET, I.D. PLATE | 2 | |
| 5 | 18248 | DECAL, HOT SURFACE WARNING | 1 | |
| 6 | 18251 | DECAL, WBH-16 | 2 | |
| 7 | 18252 | DECAL, MQ WHITEMAN | 2 | |
| 8 | 18245 | DECAL, FORKLIFT LIFTING | 6 | |
| 9 | 513608 | DECAL, LIFTING HOOK | 3 | |
| 10 | | DECAL, GASOLINE ONLY | 1..... | MOLDED INTO FUEL TANK COVER |
| 11 | | DECAL, WHITEMAN SAFETY INSTRUCTIONS..... | 1..... | MOLDED INTO FUEL TANK COVER |
| 12 | | DECAL, BUCKET DUMP LEVER | 1..... | MOLDED INTO FUEL TANK COVER |
| 13 | EM985 | DECAL, HYDRAULIC OIL | 1 | |
| 14 | 520935 | DECAL, SAFETY INSTRUCTIONS | 1 | |
| 15 | 518524 | DECAL, ISO 9001:2008 | 1 | |
| 16 | 35137 | DECAL, READ MANUAL, ASK FOR TRAINING | 1 | |

HYDRAULIC DRIVE 1 ASSY.

VIEW FROM OPERATOR'S
PLATFORM FOR MODELS:
WBH-16
WBH-16E
WBH-16F
WBH-16EF S/N ~ 1P0700
(UP TO JUNE 2023)



HYDRAULIC DRIVE 1 ASSY.

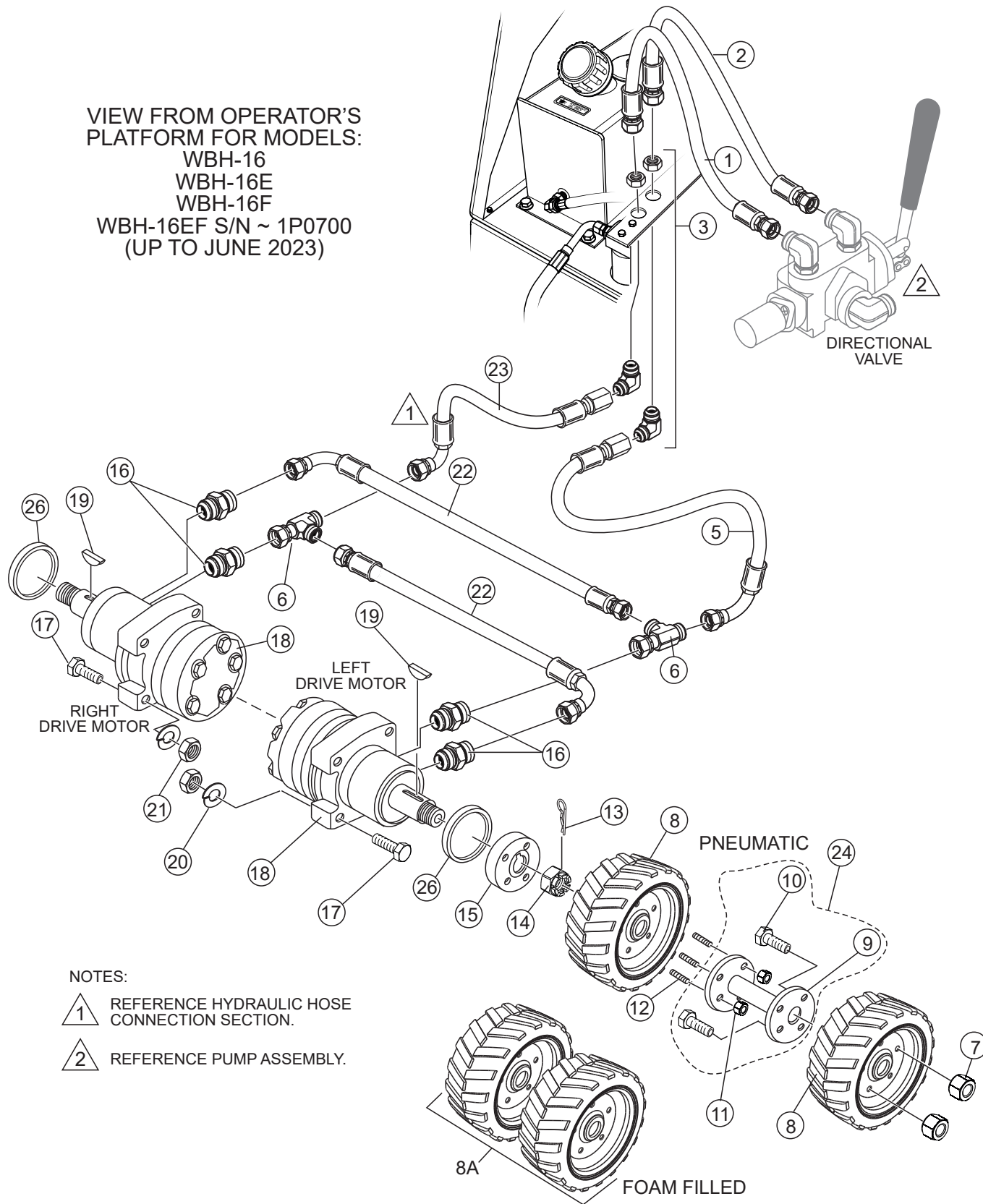
| <u>NO.</u> | <u>PART NO.</u> | <u>PART NAME</u> | <u>QTY.</u> | <u>REMARKS</u> |
|------------|-----------------|--|-------------|---|
| 1 | 18265M | HOSE, DIRECTION VALVE..... | 1 | RIGHT-DRIVE MOTOR |
| 2 | 18264M | HOSE, DIRECTION VALVE..... | 1 | LEFT-DRIVE MOTOR |
| 3 | 511810 | ADAPTER, ELBOW | 2 | |
| 5 | 18276M | HOSE, LH HYDRAULIC MOTOR | 1 | |
| 6 | 512189 | ADAPTER, TEE CONNECTOR | 2 | |
| 7 | 492527 | NUT, HEX 1/2"-20 | 8 | |
| 8 | 18029 | WHEEL, DRIVE ASSY. FRONT | 4 | PNEUMATIC TIRE |
| 8A | 18029F | WHEEL, DRIVE ASSY. FRONT | 4 | FOAM FILLED TIRE |
| 9\$ | 511692 | FLANGE, HUB | 2 | |
| 10\$ | 18237 | LUG BOLT/HUB FLANGE | 8 | |
| 11 | 492584 | NUT, HEX 1/2"-13 NYLON..... | 8 | REPLACES P/N 6109160 |
| 12 | 18190 | SCREW, HUB STUD 1/2"-20 X 2-3/4" | 8 | |
| 13 | 491689 | KEY, COTTER 1/8" X 2 | 2 | WBH16EF S/N 1P02 FEB. 2023 TO DEC. 2023 DOES NOT USE COTTER PIN BEGINNING S/N R0181 EFFECTIVE JAN. 2024 AND ABOVE USE COTTER PIN. |
| 14 | PT018038 | NUT, CASTLE 1-1/8"-18 | 2 | WBH16EF S/N 1P02 FEB. 2023 TO DEC. 2023 NUT DOES NOT USE COTTER PIN. PLAIN NUT REPLACED WITH CASTLE NUT. USE BLUE LOCTITE TORQUE TO 380 FT•LBS. BEGINNING S/N R0181 EFFECTIVE JAN. 2024 AND ABOVE USES COTTER PIN. |
| 15 | 803281 | HUB, DRIVE (IND) (WBH16/WBH16E/WBH16F) | 2 | |
| 15 | 803281 | HUB, DRIVE (IND) (WBH16EF) | 2 | S/N 1P01 AND BELOW USED UP TO JAN. 31, 2023 |
| 15 | 809428 | HUB, DRIVE (IND) (WBH16EF) | 2 | S/N 1P02 AND ABOVE EFFECTIVE FEB. 2023 |
| 16 | 3365 | ADAPTER, STRAIGHT | 4 | |
| 17 | 505718 | HEX. HEAD BOLT 1/2-20 X 2 3/4 | 8 | WBH16/WBH16E/WBH16F |
| 17 | 505718 | HEX. HEAD BOLT 1/2-20 X 2 3/4 | 8 | WBH16EF S/N 1P01 AND BELOW USED UP TO JAN. 31, 2023 |
| 17 | EM210 | HEX. HEAD BOLT 1/2-20 X 3 1/4 | 8 | WBH16EF S/N 1P02 AND ABOVE EFFECTIVE FEB. 2023 |

HYDRAULIC DRIVE 1 ASSY. (CONT'D.)

VIEW FROM OPERATOR'S
PLATFORM FOR MODELS:

WBH-16
WBH-16E
WBH-16F

WBH-16EF S/N ~ 1P0700
(UP TO JUNE 2023)



NOTES:

1 REFERENCE HYDRAULIC HOSE
CONNECTION SECTION.

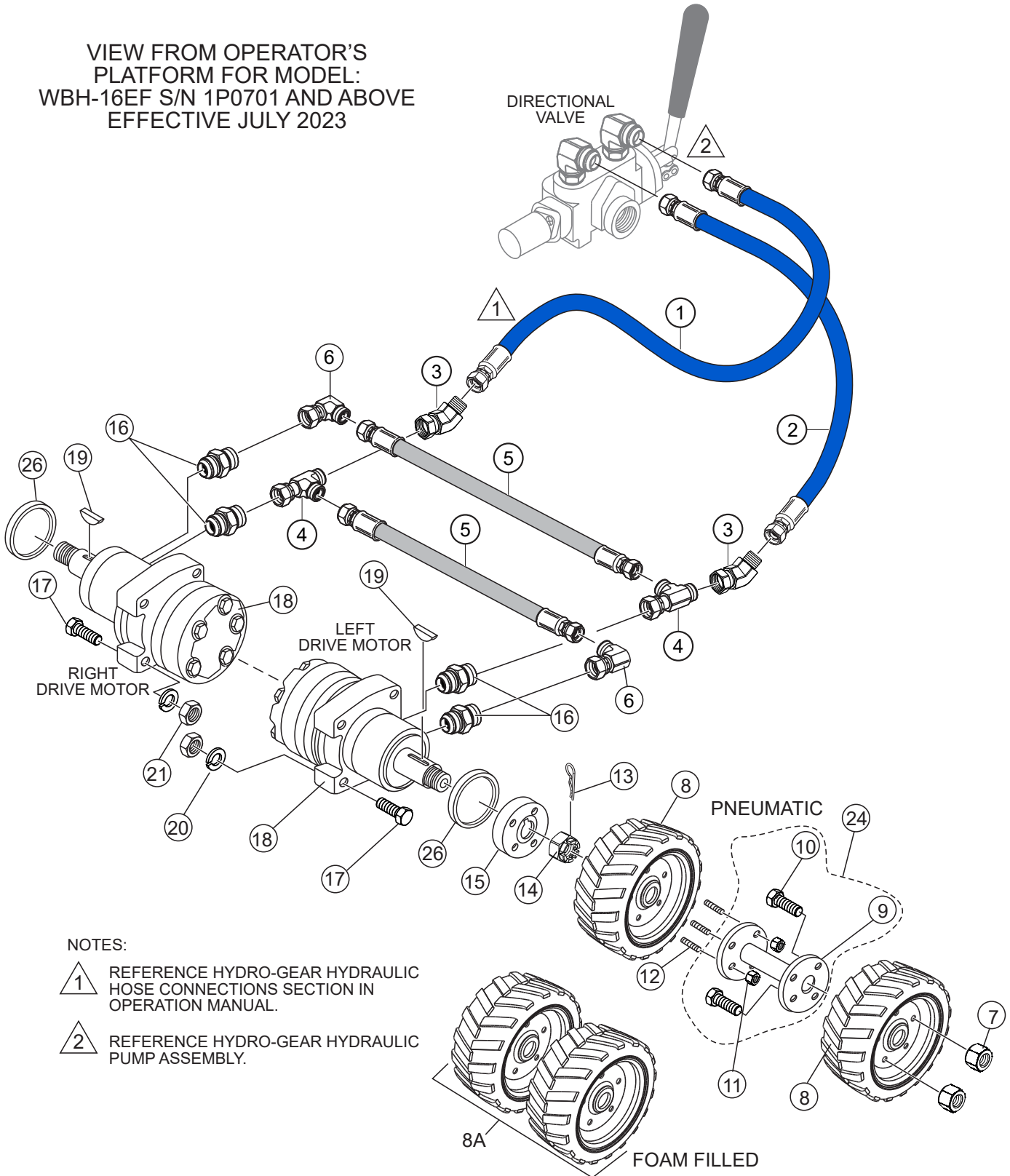
2 REFERENCE PUMP ASSEMBLY.

HYDRAULIC DRIVE ASSY. 1 (CONT'D.)

| <u>NO.</u> | <u>PART NO.</u> | <u>PART NAME</u> | <u>QTY.</u> | <u>REMARKS</u> |
|------------|-----------------|---------------------------------------|-------------|---|
| 18 | 18011 | MOTOR, HYDRAULIC DRIVE (WHITE) | 2 | WBH16/WBH16E/WBH16F |
| 18 | 18011 | MOTOR, HYDRAULIC DRIVE (WHITE) | 2 | WBH16EF S/N 1P01 AND BELOW USED UP TO JAN. 31, 2023 |
| 18 | 809239 | MOTOR, HYDRAULIC DRIVE (HENGLI) | 2 | WBH16EF S/N 1P02 AND ABOVE EFFECTIVE FEB. 2023 |
| 19 | 3311 | KEY, 7 MM X 8 MM X 1-1/4" | 2 | REPLACES P/N PE449105 |
| 20 | 6109180 | WASHER, LOCK 1/2" | 8 | WBH16/WBH16E/WBH16F |
| 20 | 6109180 | WASHER, LOCK 1/2" | 8 | WBH16EF S/N 1P01 AND BELOW USED UP TO JAN. 31, 2023 |
| 21 | 6109160 | NUT, HEX 1/2"-13 | 8 | WBH16/WBH16E/WBH16F |
| 21 | 6109160 | NUT, HEX 1/2"-13 | 8 | WBH16EF S/N 1P01 AND BELOW USED UP TO JAN. 31, 2023 |
| 21 | 492584 | NUT, NYLOC 1/2"-13 | 8 | WBH16EF S/N 1P02 AND ABOVE EFFECTIVE FEB. 2023 |
| 22 | 18027 | HOSE, DRIVER MOTOR CROSSOVER | 2 | |
| 23 | 18275M | HOSE, RH HYDRAULIC MOTOR | 1 | |
| 24 | 516528 | FLANGE HUB ASSY. | 1 | INCLUDES ITEMS W/\$ |
| 26 | 809610 | SPACER RING (WBH16EF) | 2 | S/N 1P02 AND ABOVE EFFECTIVE FEB. 2023 |

HYDRAULIC DRIVE 2 ASSY.

VIEW FROM OPERATOR'S
PLATFORM FOR MODEL:
WBH-16EF S/N 1P0701 AND ABOVE
EFFECTIVE JULY 2023

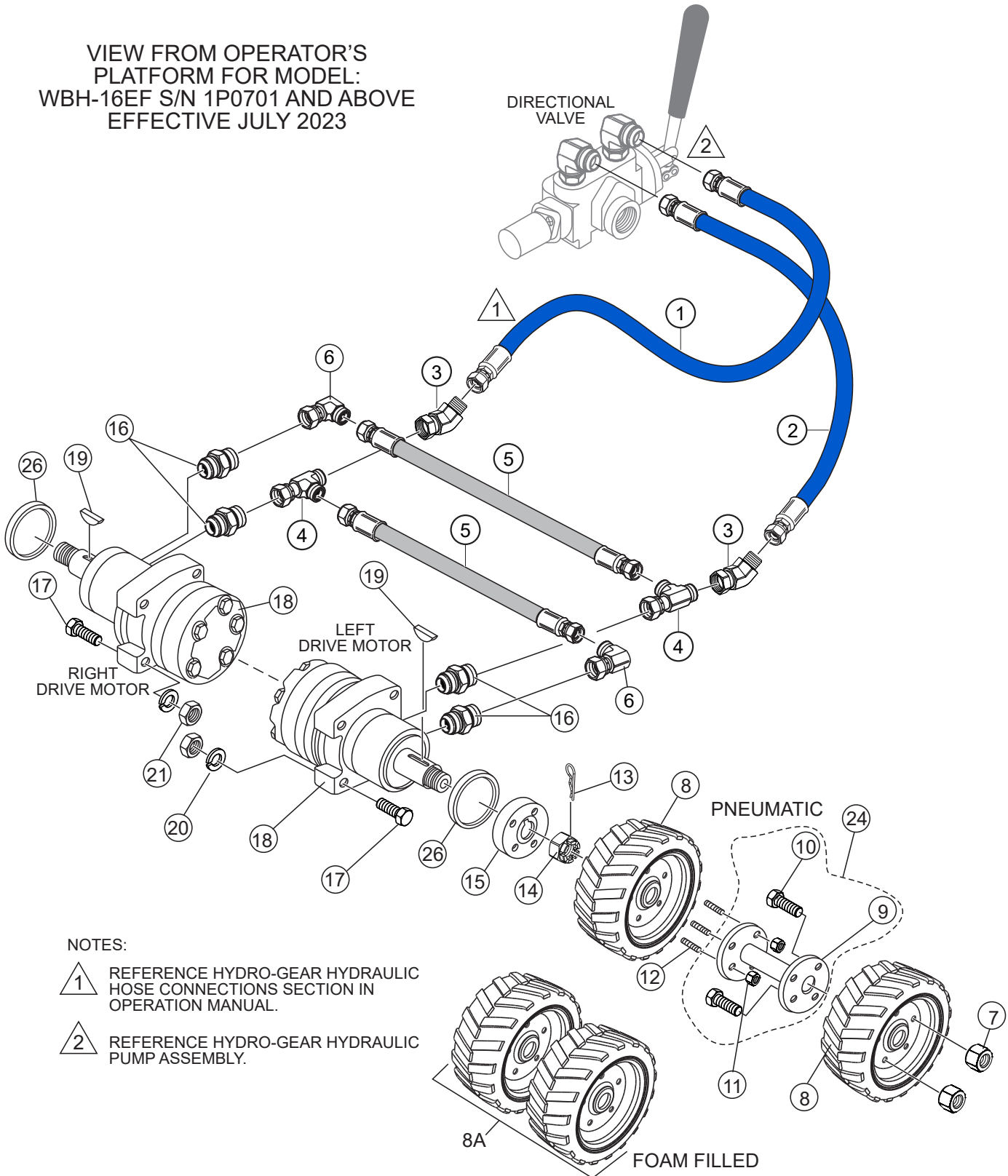


HYDRAULIC DRIVE 2 ASSY.

| <u>NO.</u> | <u>PART NO.</u> | <u>PART NAME</u> | <u>QTY.</u> | <u>REMARKS</u> |
|------------|-----------------|--|-------------|---|
| 1 | CIP808656 | HOSE, DIRECTION VALVE | 1 | LEFT-DRIVE MOTOR |
| 2 | 808655 | HOSE, DIRECTION VALVE | 1 | RIGHT-DRIVE MOTOR |
| 3 | 506200 | FITTING | 2 | |
| 4 | 506202 | TEE FITTING | 2 | |
| 5 | 808647 | HOSE, DRIVE MOTOR CROSS OVER | 2 | |
| 6 | 506195 | 90° FITTING | 2 | |
| 7 | 492527 | NUT, HEX 1/2"-20 | 8 | |
| 8 | 18029 | WHEEL, DRIVE ASSY. FRONT | 4 | PNEUMATIC TIRE |
| 8A | 18029F | WHEEL, DRIVE ASSY. FRONT | 4 | FOAM FILLED TIRE |
| 9\$ | 511692 | FLANGE, HUB | 2 | |
| 10\$ | 18237 | LUG BOLT/HUB FLANGE | 8 | |
| 11 | 492584 | NUT, HEX 1/2"-13 NYLON | 8 | REPLACES P/N 6109160 |
| 12 | 18190 | SCREW, HUB STUD 1/2"-20 X 2-3/4" | 8 | |
| 13 | 491689 | KEY, COTTER 1/8" X 2 | 2 | WBH16EF S/N 1P02 FEB. 2023 TO DEC. 2023 DOES NOT USE COTTER PIN BEGINNING S/N R0181 EFFECTIVE JAN. 2024 AND ABOVE USES COTTER PIN |
| 14 | PT018038 | NUT, CASTLE 1-1/8"-18 | 2 | WBH16EF S/N 1P02 FEB. 2023 TO DEC. 2023 NUT DOES NOT USE COTTER PIN. PLAIN NUT REPLACED WITH CASTLE NUT. USE BLUE LOCTITE TORQUE TO 380 FT•LBS. BEGINNING S/N R0181 EFFECTIVE JAN. 2024 AND ABOVE USES COTTER PIN. |
| 15 | 803281 | HUB, DRIVE (IND) (WBH16/WBH16E/WBH16F) | 2 | |
| 15 | 803281 | HUB, DRIVE (IND) (WBH16EF) | 2 | S/N 1P01 AND BELOW USED UP TO JAN. 31, 2023 |
| 15 | 809428 | HUB, DRIVE (IND) (WBH16EF) | 2 | S/N 1P02 AND ABOVE EFFECTIVE FEB. 2023 |
| 16 | 506203 | FITTING | 4 | |
| 17 | 505718 | HEX. HEAD BOLT 1/2-20 X 2 3/4 | 8 | WBH16/WBH16E/WBH16F |
| 17 | 505718 | HEX. HEAD BOLT 1/2-20 X 2 3/4 | 8 | WBH16EF S/N 1P01 AND BELOW USED UP TO JAN. 31, 2023 |
| 17 | EM210 | HEX. HEAD BOLT 1/2-20 X 3 1/4 | 8 | WBH16EF S/N 1P02 AND ABOVE EFFECTIVE FEB. 2023 |

HYDRAULIC DRIVE 2 ASSY. (CONT'D.)

VIEW FROM OPERATOR'S
PLATFORM FOR MODEL:
WBH-16EF S/N 1P0701 AND ABOVE
EFFECTIVE JULY 2023



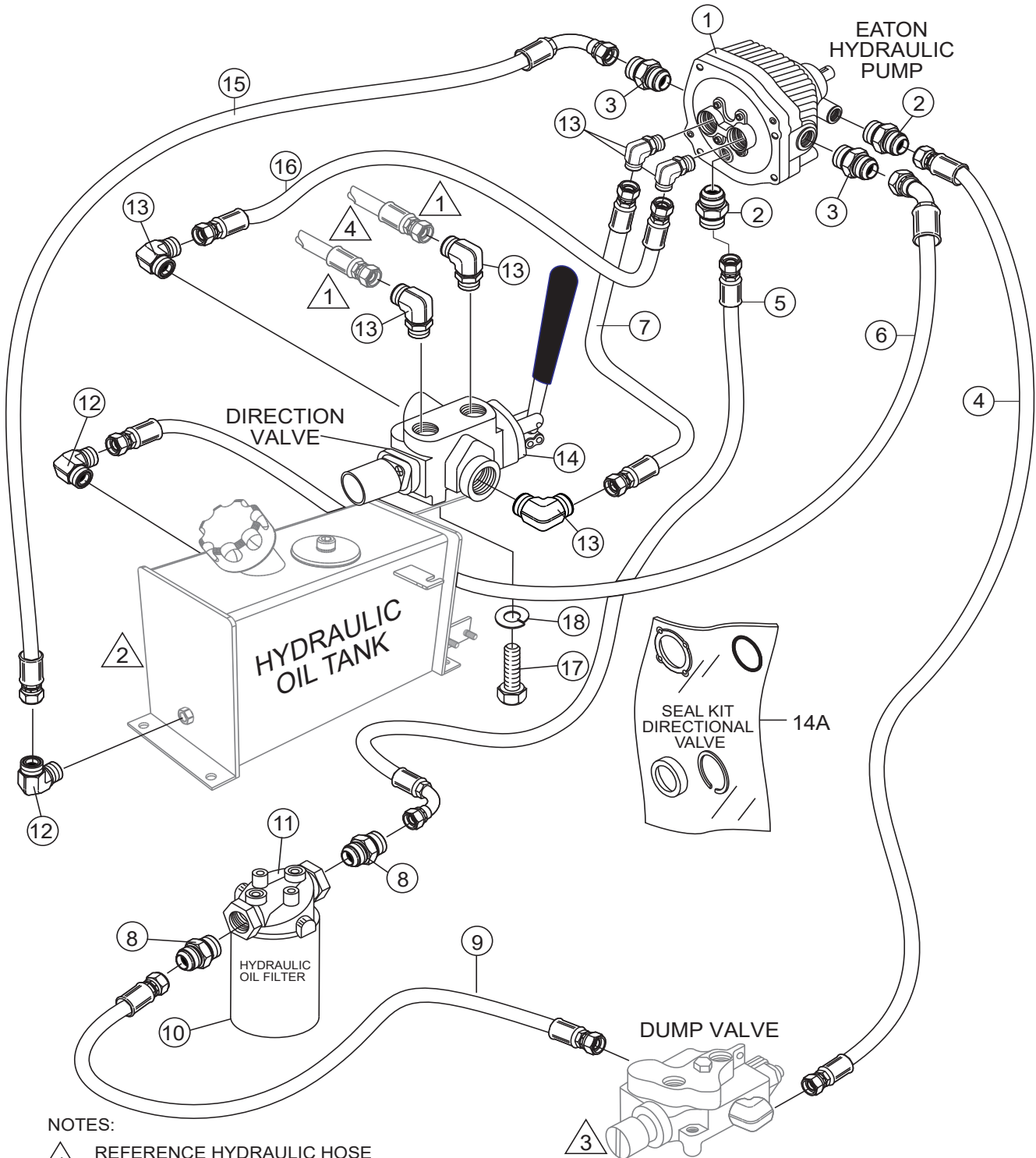
NOTES:

- 1 REFERENCE HYDRO-GEAR HYDRAULIC HOSE CONNECTIONS SECTION IN OPERATION MANUAL.
- 2 REFERENCE HYDRO-GEAR HYDRAULIC PUMP ASSEMBLY.

HYDRAULIC DRIVE 2 ASSY. (CONT'D.)

| <u>NO.</u> | <u>PART NO.</u> | <u>PART NAME</u> | <u>QTY.</u> | <u>REMARKS</u> |
|------------|-----------------|---|-------------|---|
| 18 | 18011 | MOTOR, HYDRAULIC DRIVE (WHITE) | 2 | WBH16/WBH16E/WBH16F |
| 18 | 18011 | MOTOR, HYDRAULIC DRIVE (WHITE) | 2 | WBH16EF S/N 1P01 ~ 1P06 USED UP TO JAN. 31, 2023 |
| 18 | 809239 | MOTOR, HYD. DRIVE, HENGLI (WBH16EF) | 2 | S/N 1P02 EFFECTIVE FEB. 2023 AND ABOVE |
| 19 | 3311 | KEY, 7 MM X 8 MM X 1-1/4" | 2 | REPLACES P/N PE449105 |
| 20 | 6109180 | WASHER, LOCK 1/2" | 8 | WBH16/WBH16E/WBH16F |
| 20 | 6109180 | WASHER, LOCK 1/2" | 8 | WBH16EF S/N 1P01 AND BELOW USED UP TO JAN. 31, 2023 |
| 21 | 6109160 | NUT, HEX 1/2"-13 | 8 | WBH16/WBH16E/WBH16F |
| 21 | 6109160 | NUT, HEX 1/2"-13 | 8 | WBH16EF S/N 1P01 AND BELOW USED UP TO JAN. 31, 2023 |
| 21 | 492584 | NUT, NYLOC 1/2"-13 | 8 | WBH16EF S/N 1P02 AND ABOVE EFFECTIVE FEB. 2023 |
| 24 | 516528 | FLANGE HUB ASSY. | 1 | INCLUDES ITEMS W/\$ |
| 26 | 809610 | SPACER RING (WBH16EF) | 2 | S/N 1P02 AND ABOVE EFFECTIVE FEB. 2023 |

EATON HYDRAULIC PUMP ASSY.



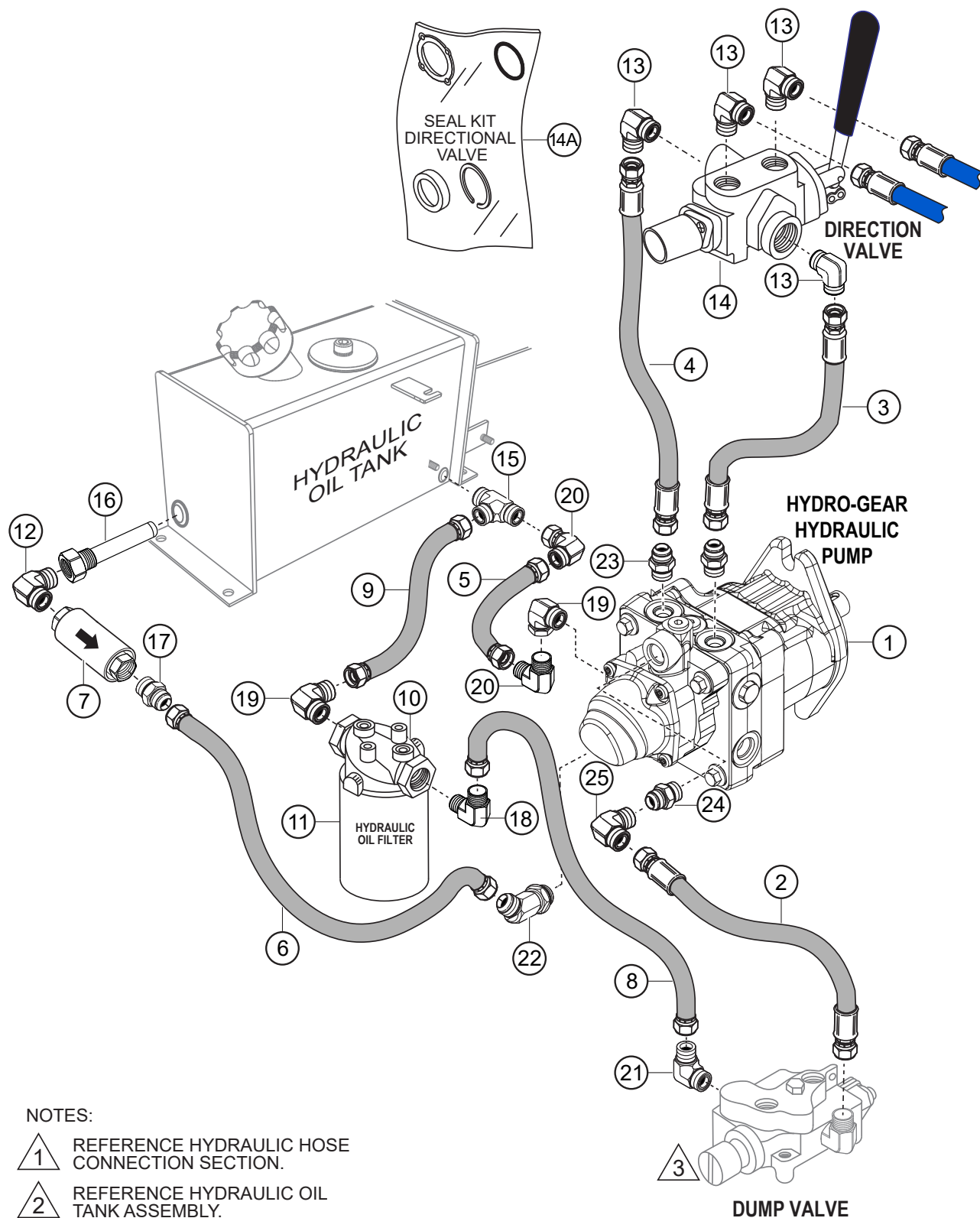
NOTES:

- 1** REFERENCE HYDRAULIC HOSE CONNECTION SECTION.
- 2** REFERENCE HYDRAULIC OIL TANK ASSEMBLY.
- 3** REFERENCE DUMP VALVE ASSEMBLY.
- 4** REFERENCE HYDRAULIC DRIVE ASSEMBLY ITEMS 1 AND 2 FOR HOSE PART NUMBERS

EATON HYDRAULIC PUMP ASSY.

| <u>NO.</u> | <u>PART NO.</u> | <u>PART NAME</u> | <u>QTY.</u> | <u>REMARKS</u> |
|------------|-----------------|------------------------------------|-------------|---------------------|
| 1 | 18035 | PUMP, HYDRAULIC | 1 | |
| 2 | 511808 | ADAPTER, STRAIGHT | 2 | |
| 3 | 3365 | ADAPTER, STRAIGHT | 2 | |
| 4 | 18256M | HOSE, PUMP TO DUMP VALVE | 1 | |
| 5 | 18258M | HOSE, FILTER TO PUMP | 1 | |
| 6 | 18261M | HOSE, PUMP TO TANK | 1 | |
| 7 | 18265M | HOSE, PUMP TO DIRECTION VALVE..... | 1..... | REPLACES P/N 18263M |
| 8 | 512190 | ADAPTER, STRAIGHT | 2 | |
| 9 | 18257M | HOSE, FILTER TO DUMP VALVE | 1 | |
| 10 | 508667 | FILTER, HYDRAULIC | 1 | |
| 11 | 508664 | HYDRAULIC FILTER HEAD | 1 | |
| 12 | 511799 | ADAPTER, ELBOW | 2 | |
| 13 | 3322 | ADAPTER, ELBOW | 6 | |
| 14 | 18058 | VALVE, DIRECTION CONTROL, TRAVEL | 1 | |
| 14A | 18058SK | SEAL KIT, DIRECTIONAL VALVE | 1 | |
| 15 | 18262M | HOSE, TANK TO PUMP | 1 | |
| 16 | 18266M | HOSE, PUMP TO DIRECTION VALVE | 1 | |
| 17 | EM963055 | HEX HEAD CAP SCREW..... | 2..... | REPLACES P/N 492373 |
| 18 | 0166 A | WASHER, LOCK 3/8" | 2..... | REPLACES P/N 492624 |

HYDRO-GEAR HYDRAULIC PUMP ASSY.



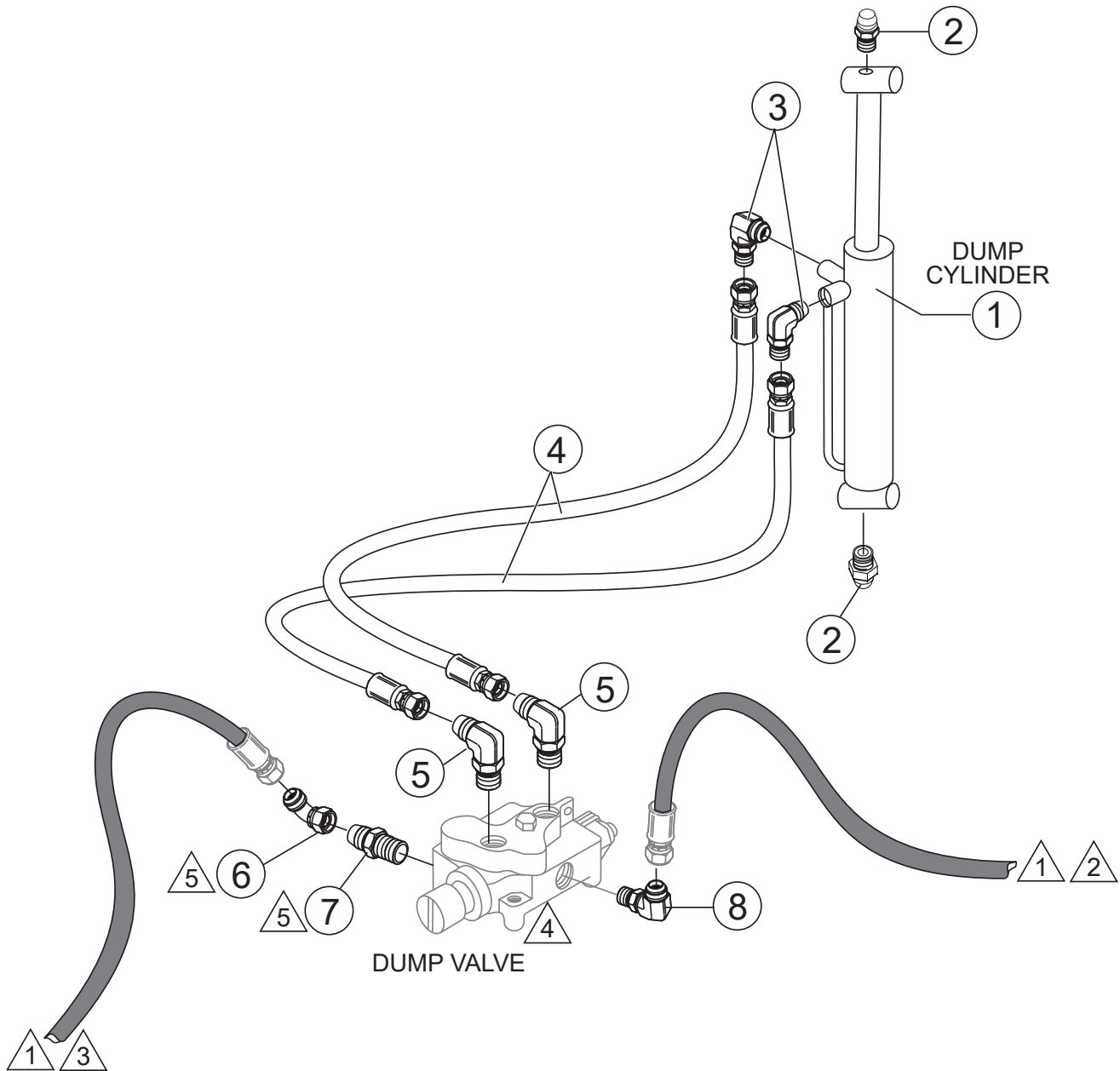
NOTES:

- 1 REFERENCE HYDRAULIC HOSE CONNECTION SECTION.
- 2 REFERENCE HYDRAULIC OIL TANK ASSEMBLY.
- 3 REFERENCE DUMP VALVE ASSEMBLY.
- 4 REFERENCE HYDRAULIC DRIVE ASSEMBLY ITEMS 1 AND 2 FOR HOSE PART NUMBERS

HYDRO-GEAR HYDRAULIC PUMP ASSY.

| <u>NO.</u> | <u>PART NO.</u> | <u>PART NAME</u> | <u>QTY.</u> | <u>REMARKS</u> |
|------------|-----------------|-----------------------------------|-------------|----------------|
| 1 | 808770 | TRANSMISSION, HYDRO-GEAR | 1 | |
| 2 | 808648 | HOSE, PUMP TO DUMP VALVE | 1 | |
| 3 | 808652 | HOSE, PUMP TO DIRECTION VALVE | 1 | |
| 4 | 808653 | HOSE, PUMP TO DIRECTION VALVE | 1 | |
| 5 | 808654 | HOSE, PUMP TO OIL TANK | 1 | |
| 6 | 808861 | HOSE, PUMP TO IN-LINE FILTER | 1 | |
| 7 | 13210 | STRAINER, IN-LINE | 1 | |
| 8 | 808649 | HOSE, HYD. FILTER TO DUMP VALVE | 1 | |
| 9 | 808651 | HOSE, OIL TANK TO HYD. OIL FILTER | 1 | |
| 10 | 508664 | HYDRAULIC FILTER HEAD | 1 | |
| 11 | 508667 | FILTER, HYDRAULIC | 1 | |
| 12 | 511799 | ADAPTER, ELBOW | 1 | |
| 13 | EM16524 | ADAPTER, ELBOW | 4 | |
| 14 | 18058 | VALVE, DIRECTION CONTROL, TRAVEL | 1 | |
| 14A | 18058SK | SEAL KIT, DIRECTIONAL VALVE | 1 | |
| 15 | 506201 | FITTING TEE | 1 | |
| 16 | 18229 | STRAINER SUCTION | 1 | |
| 17 | CIP808860 | ADAPTER, 3/4 X 1/2 CR-S | 1 | |
| 18 | CIP511804 | ADAPTER, ELBOW | 1 | |
| 19 | EM25507 | FITTING | 2 | |
| 20 | 506195 | FITTING | 2 | |
| 21 | 506191 | ADAPTER, ELBOW | 1 | |
| 22 | 514230 | ADAPTER, 10 V50X-S | 1 | |
| 23 | 506193 | FITTING | 2 | |
| 24 | 512190 | ADAPTER, STRAIGHT | 1 | |
| 25 | 519967 | FITTING | 1 | |

HYDRAULIC DUMP ASSY.



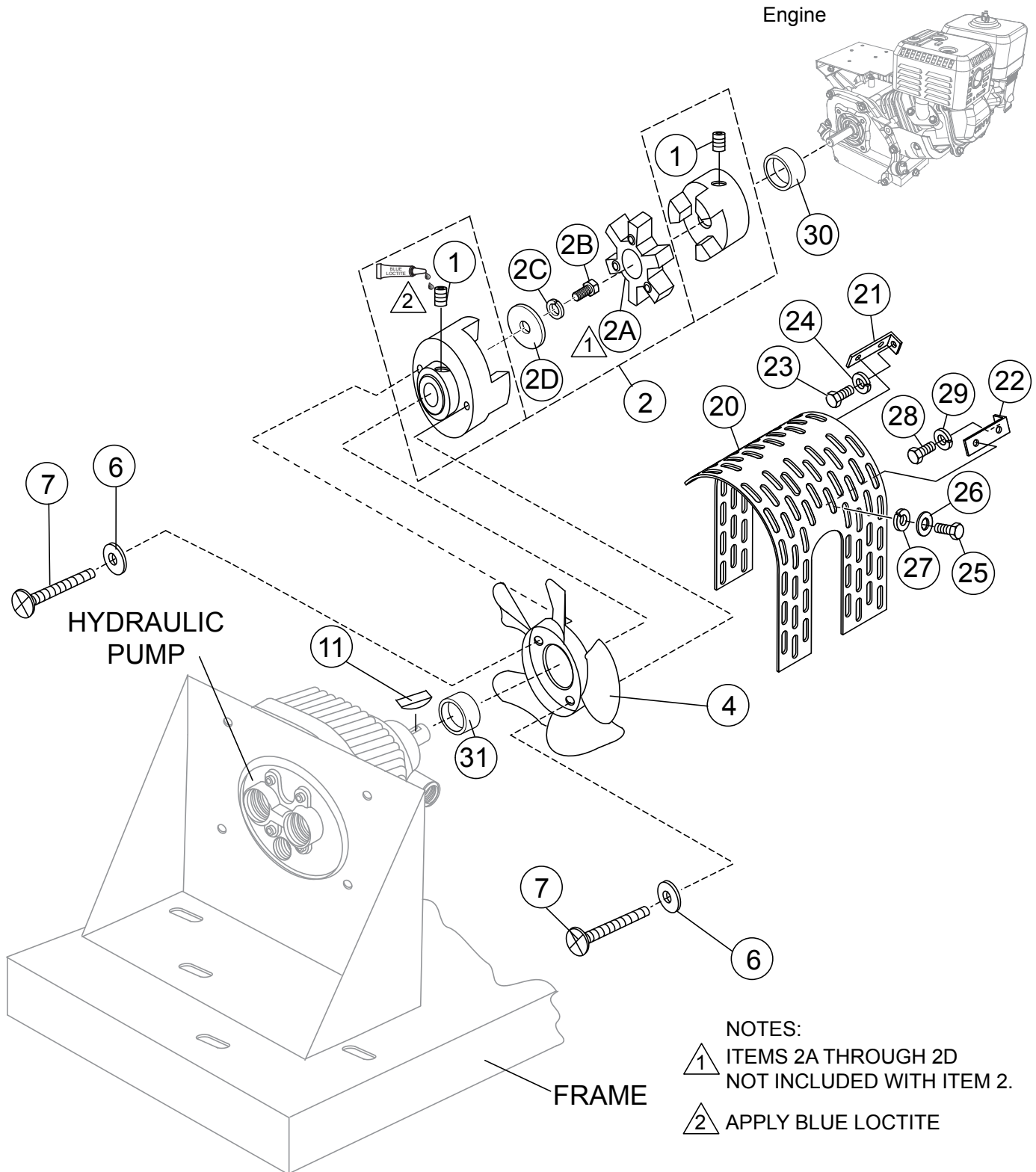
NOTES:

- 1** REFERENCE HYDRAULIC HOSE CONNECTION SECTION.
- 2** REFERENCE HYDRAULIC PUMP ASSEMBLY ITEM 4 FOR HOSE PART NUMBER.
- 3** REFERENCE HYDRAULIC PUMP ASSEMBLY ITEM 9 FOR HOSE PART NUMBER.
- 4** REFERENCE HANDLE/FOOT DUMP CONTROLS ASSEMBLY ITEM 8 FOR DUMP VALVE PART NUMBER.
- 5** ITEM 5 AND 6 IS WITH EATON HYDRAULIC PUMP ASSEMBLY.

HYDRAULIC DUMP ASSY.

| <u>NO.</u> | <u>PART NO.</u> | <u>PART NAME</u> | <u>QTY.</u> | <u>REMARKS</u> |
|------------|-----------------|---------------------------------|-------------|----------------|
| 1 | 18022 | CYLINDER, HYDRAULIC DUMP | 1 | |
| 2 | 491705 | ZERK FITTING | 2 | |
| 3 | 511803 | ADAPTER, ELBOW | 2 | |
| 4 | 18020 | HOSE, DUMP VALVE TO HYD. PISTON | 2 | |
| 5 | 511804 | ADAPTER, ELBOW MALE | 2 | |
| 6 | 512234 | ADAPTER, ELBOW | 1 | |
| 7 | 511806 | ADAPTER, STRAIGHT | 1 | |
| 8 | 506191 | ADAPTER, ELBOW | 1 | |

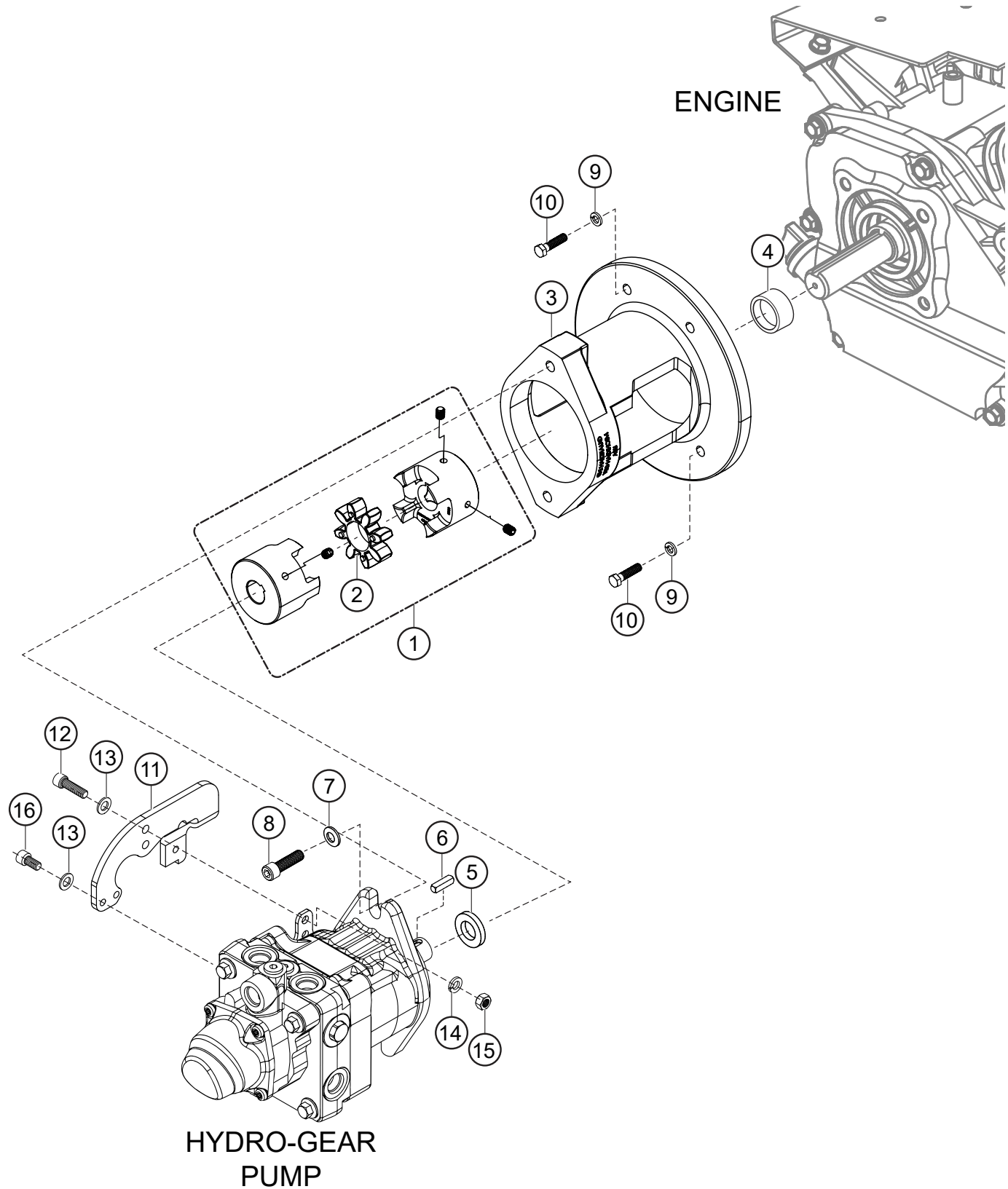
EATON PUMP AND COUPLING ASSY.



EATON PUMP AND COUPLING ASSY.

| <u>NO.</u> | <u>PART NO.</u> | <u>PART NAME</u> | <u>QTY.</u> | <u>REMARKS</u> |
|------------|-----------------|----------------------------------|-------------|---------------------|
| 1# | 492472 | SCREW, ALLEN HEAD 3/8"-16 X 3/4" | 2 | |
| 2 | 18051 | COUPLING, ENGINE SHAFT | 1 | INCLUDES ITEMS W/# |
| 2A | 18051RS | SPIDER, URETHANE | 1 | |
| 2B | 492356 | SCREW, 1/4" X 3/4" GRD 5 | 1 | |
| 2C | 492622 | WASHER, LOCK 1/4" | 1 | |
| 2D | EM923057 | WASHER, FLAT 3/4" | 1 | REPLACES P/N 504451 |
| 4 | 18112 | FAN | 1 | |
| 6 | 492596 | WASHER, FLAT 1/4" | 2 | |
| 7 | 492355 | SCREW, HHC 1/4"-20 X 1/2" | 2 | |
| 11 | 506250 | KEY, WOODRUFF | 1 | |
| 20 | 513761 | FAN GUARD | 1 | |
| 21 | 512493 | BRACKET, LONG | 1 | |
| 22 | 513737 | BRACKET, SHORT | 1 | |
| 23 | 492373 | BOLT, C/H 3/8" X 3/4" NC GRD 5 | 1 | |
| 24 | 492624 | WASHER, LOCK 3/8" | 1 | |
| 25 | 512367 | BOLT, C/H 3/16" X 1/2" NC GRD 2 | 4 | |
| 26 | 492595 | WASHER, FLAT 3/16" | 4 | |
| 27 | 492621 | WASHER, LOCK 3/16" | 4 | |
| 28 | 492438 | BOLT, C/H 5/16" X 1" NF GRD 5 | 1 | |
| 29 | 492623 | WASHER, LOCK 5/16" | 1 | |
| 30 | 802442 | LOCK COLLAR | 1 | |
| 31 | 803009 | BUSHING, HYDRAULIC PUMP | 1 | |

HYDRO-GEAR PUMP AND COUPLING ASSY.



HYDRO-GEAR PUMP AND COUPLING ASSY.

| <u>NO.</u> | <u>PART NO.</u> | <u>PART NAME</u> | <u>QTY.</u> | <u>REMARKS</u> |
|------------|-----------------|----------------------------------|-------------|--------------------|
| 1 | 808658C | COUPLING ASSEMBLY | 1..... | INCLUDES ITEMS W/# |
| 2# | 808658S | SPIDER, COUPLING | 1 | |
| 3 | 809166 | MACHINED HOUSING, COUPLING | 1 | |
| 4 | 809845 | ENGINE COUPLING SEPARATOR | 1 | |
| 5 | 809828 | WASHER, FLAT | 1 | |
| 6 | CIP502625 | KEY, 1/4" X 25MM | 1 | |
| 7 | CIP519337 | WASHER, FLAT | 1 | |
| 8 | 510717 | BOLT, 1/2 X 1-3/4" | 2 | |
| 9 | 0166A | WASHER, LOCK | 4 | |
| 10 | EM963057 | BOLT, 3/8" X 1-1/2" | 4 | |
| 11 | 808650 | ACTIVATION LEVER HYDRO-GEAR PUMP | 1 | |
| 12 | 520467 | BOLT, 5/16" NF X 1" | 2 | |
| 13 | 508344 | WASHER, FLAT 5/16" | 4 | |
| 14 | EM923343 | WASHER, LOCK 5/16" | 2 | |
| 15 | 509143 | HEX. NUT, 5/16" | 2 | |
| 16 | 808771 | BOLT, 5/16" NF X 1/2" | 2 | |

1

2

3

5

6

11

12

13

14

15

7

9

10

11

12

13

14

15

5

6

7

9

10

11

12

13

14

15

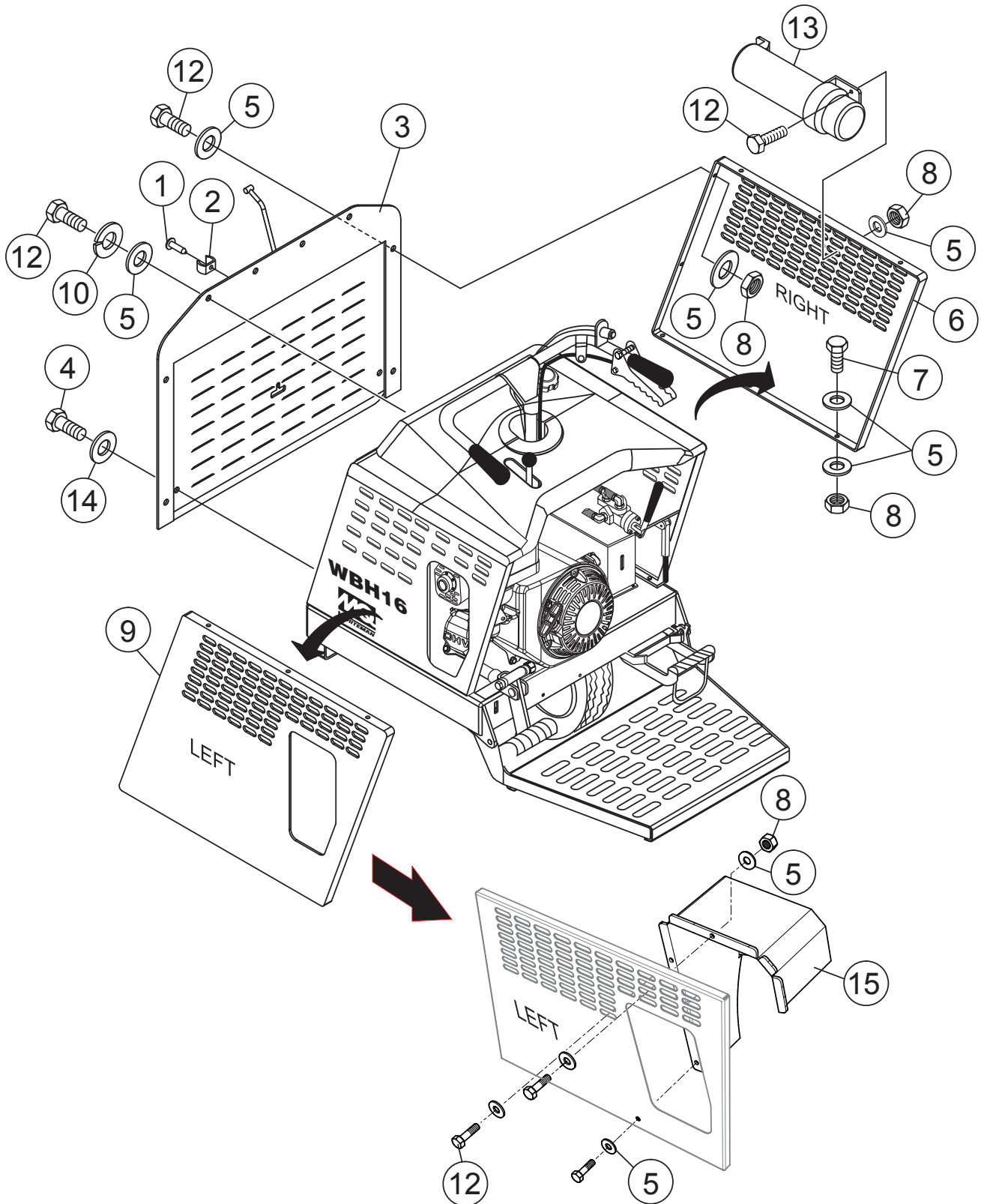
DASHED (-----) ITEMS ARE LOCATED ON THE UNDERSIDE OF THE BASE PLATE

LOCATED ON THE BACKSIDE OF COUNTERWEIGHT

TUB ASSY.

| <u>NO.</u> | <u>PART NO.</u> | <u>PART NAME</u> | <u>QTY.</u> | <u>REMARKS</u> |
|------------|-----------------|-----------------------------------|-------------|---------------------|
| 1 | 808271 | TUB, PLASTIC, 16 CU. FT. | 1 | |
| 2 | 492313 | SCREW, HHC 3/8"-16 X 1-1/2" | 9 | |
| 3 | 512193 | WASHER, FLAT 3/8" LARGE | 9 | |
| 5 | 490957 | RING, SNAP | 6 | |
| 6 | 18130 | PIN, HYD. PISTON CROSS | 2 | |
| 7 | 18129 | PIN, TUB FRAME CROSS | 1 | |
| 9 | 0202 | SCREW, HHC 5/16"-18 X 1 ZINC..... | 4 | REPLACES P/N 492364 |
| 10 | 492597 | WASHER, FLAT 9.5 X 22.2 | 8 | |
| 11 | 492583 | NUT, NYLOC 3/8"-16 | 9 | |
| 12 | 492582 | NUT, NYLOC 5/16"-18 | 4 | |
| 13 | 512279 | SUPPORT, BUM STOP | 2 | |
| 14 | 18099 | FRAME, TUB MOUNT, 16 CU. FT. | 1 | BEFORE JULY 2020 |
| 14 | 522262 | FRAME, TUB MOUNT, 16 CU. FT. | 1 | EFFECTIVE JULY 2020 |
| 15 | EM916019 | GREASE FITTING | 2 | REPLACES P/N 491705 |

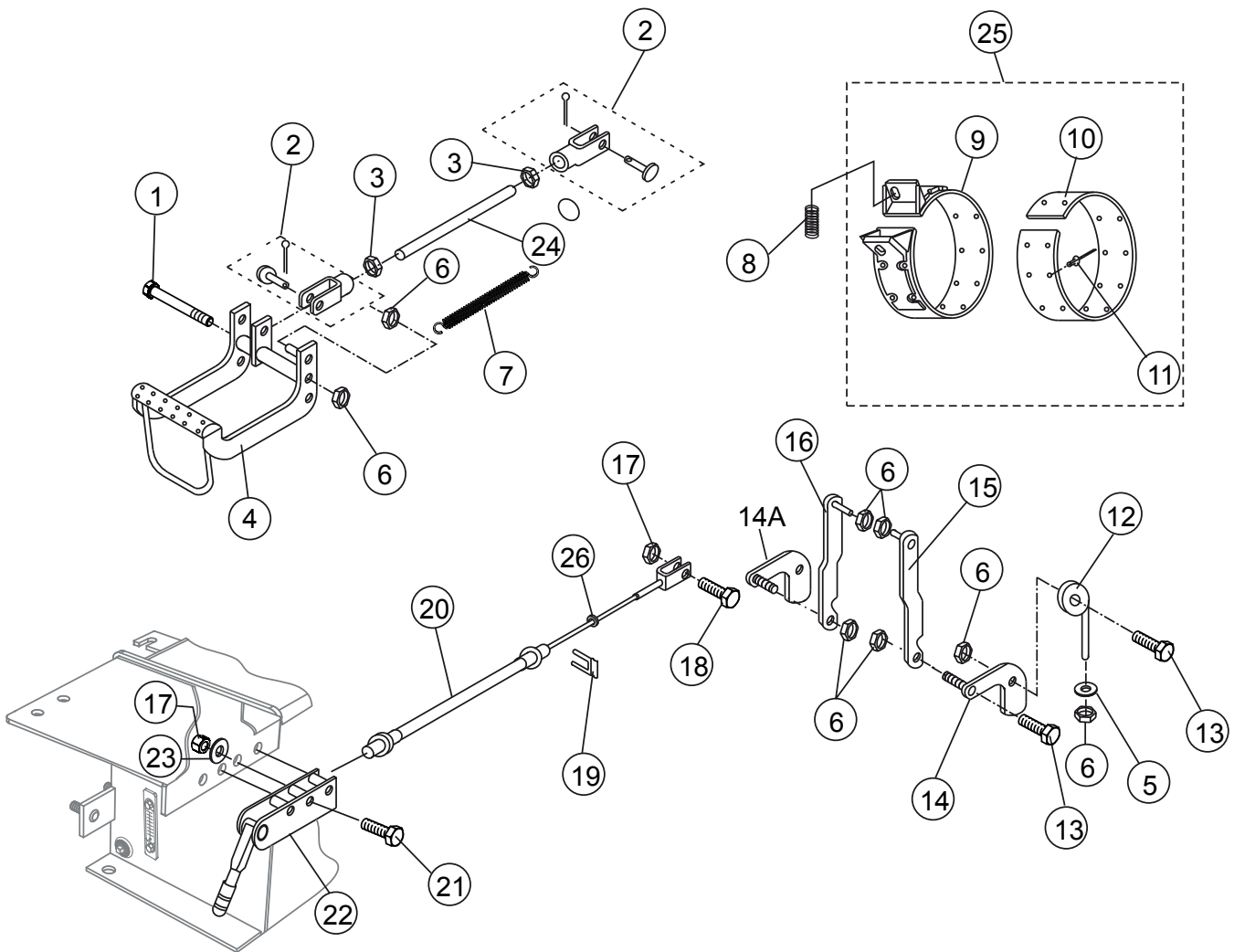
PANEL ASSY.



PANEL ASSY.

| <u>NO.</u> | <u>PART NO.</u> | <u>PART NAME</u> | <u>QTY.</u> | <u>REMARKS</u> |
|------------|-----------------|----------------------------------|-------------|---------------------|
| 1 | 503978 | POP RIVET AM-56 | 1 | |
| 2 | 511474 | FASTENER, ACCESS DOOR | 1 | |
| 3 | 18008 | DOOR, ACCESS | 1 | |
| 4 | 492355 | SCREW, 1/4" X 1/2" NC GRD 5 | 2 | |
| 5 | 492597 | WASHER, FLAT 3/8" | 32 | |
| 6 | 18141 | COVER, RIGHT/SIDE ENGINE | 1 | |
| 7 | 492364 | SCREW, HHC 5/16"-18 X 1 | 6 | |
| 8 | 492582 | NUT, NYLOC 5/16"-18 | 9 | |
| 9 | 801026 | COVER, LEFT/SIDE ENGINE | 1 | |
| 10 | 492623 | WASHER, LOCK 5/16" | 4 | |
| 12 | 492363 | SCREW, HHC 5/16" X 3/4" NC GRD 5 | 10 | |
| 13 | 23297 | MANUAL HOLDER | 1 | |
| 14 | EM923057 | WASHER, 1/4" | 4..... | REPLACES P/N 492596 |
| 15 | 802755 | MUFFLER DEFLECTOR | 1 | |

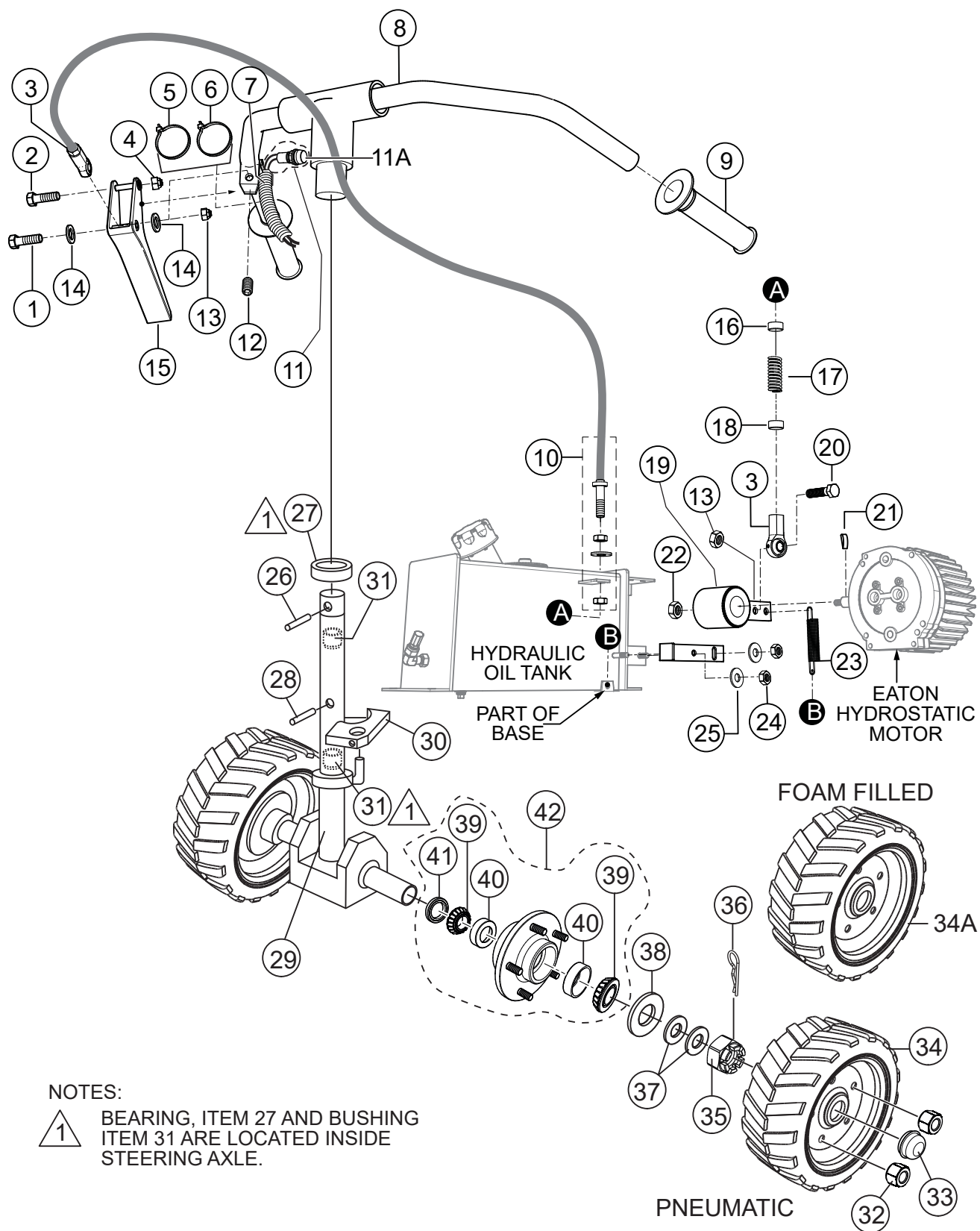
BRAKE ASSY.



BRAKE ASSY.

| <u>NO.</u> | <u>PART NO.</u> | <u>PART NAME</u> | <u>QTY.</u> | <u>REMARKS</u> |
|------------|-----------------|------------------------------------|-------------|---------------------|
| 1 | 511762 | SCREW, HHC 1/2"-13 X 8 | 1 | |
| 2 | 511698 | CLEVIS, ASSY. BRAKE | 2 | |
| 3 | 492574 | NUT, HEX 3/8"-24 NF | 2 | |
| 4 | 18111 | PEDAL, BRAKE | 1 | |
| 5 | 621 | WASHER, FLAT 1/2" | 1 | |
| 6 | 492584 | NUT, NYLOC 1/2"-13 | 10 | |
| 7 | 18167 | SPRING, BRAKE PEDAL | 1 | |
| 8 | 18307 | SPRING, BRAKE | 2 | |
| 9\$ | | BAND, BRAKE..... | 2..... | NOT SOLD SEPARATELY |
| 10\$ | | LINING, BRAKE..... | 2..... | NOT SOLD SEPARATELY |
| 11\$ | 503723 | RIVET, BRAKE LINING | 56 | |
| 12 | 18303 | SHAFT, CRANK PIN | 2 | |
| 13 | 492395 | SCREW, HHC 1/2"-13 X 1-3/4" | 2 | |
| 14 | 512602 | BRAKE LEVER, LEFT | 1 | |
| 14A | 512601 | BRAKE LEVER, RIGHT | 1 | |
| 15 | 18032 | LINKAGE, RIGHT BRAKE | 1 | |
| 16 | 18314 | LINKAGE, LEFT BRAKE | 1 | |
| 17 | 492582 | NUT, NYLOC 5/16" | 3 | |
| 18 | 492365 | SCREW, HHC 5/16" X 1-1/4" NC GRD 5 | 1 | |
| 19 | 505170 | CLIP, PARK CABLE | 1 | |
| 20 | 18016 | CABLE, PARK BRAKE | 1 | |
| 21 | 492367 | SCREW, HHC 5/16"-18 X 1-3/4" | 3 | |
| 22 | 18057 | LEVER, ASSY. PARK BRAKE | 1 | |
| 23 | 492597 | WASHER, FLAT 3/8" | 6 | |
| 24 | 18145 | ROD, BRAKE CONTROL | 1 | |
| 25 | 512881 | BRAKE BAND ASSY..... | 2..... | INCLUDES ITEMS W/\$ |
| 26 | 492600 | WASHER, FLAT 1/2" | 2 | |

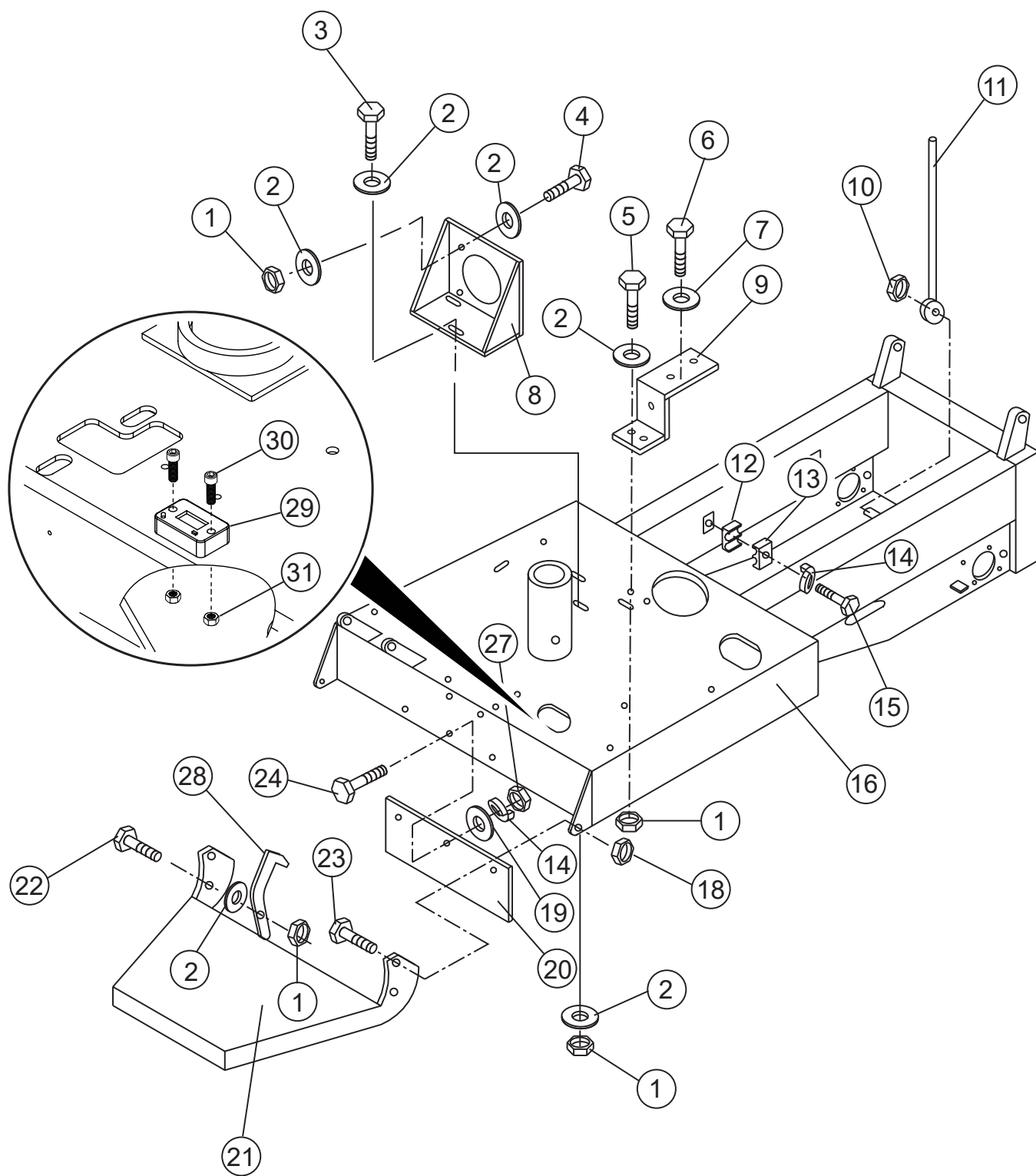
STEERING AND CONTROLS ASSY.



STEERING AND CONTROLS ASSY.

| <u>NO.</u> | <u>PART NO.</u> | <u>PART NAME</u> | <u>QTY.</u> | <u>REMARKS</u> |
|------------|-----------------|----------------------------------|-------------|---------------------|
| 1 | 2508 | SCREW, HHC 1/4"-20 X 2-1/4"..... | 1..... | REPLACES P/N 512414 |
| 2 | 492369 | SCREW, HHC 5/16"-18 X 2-1/4" | 1 | |
| 3 | 18183 | ROD-END, THROTTLE CABLE | 2 | |
| 4 | 492582 | NUT, NYLOC 5/16"-18 | 1 | |
| 5 | 504505 | WRAP, TIE 4.6 X 360 MM | 1 | |
| 6 | 491030 | WRAP, TIE 2.5 X 142 MM | 2 | |
| 7 | 505304 | COVER, WIRE (LOOM) | 1 | |
| 8 | 18242 | HANDLE BAR | 1 | |
| 9 | 15081 | GRIP, HANDLE | 2 | |
| 10 | 18133 | CABLE, THROTTLE | 1 | |
| 11 | 515417 | SWITCH HARNESS ASSY. | 1 | |
| 11A | 18131 | SWITCH, KILL..... | 1..... | REPLACES P/N 18025 |
| 12 | 492465 | SCREW, ALLEN HEAD 1/4"-20 X 3/8" | 1 | |
| 13 | 492581 | NUT, NYLOC 1/4"-20 | 2 | |
| 14 | 509161 | WASHER, FLAT 5/16" | 2 | |
| 15 | 18132 | LEVER, THROTTLE | 1 | |
| 16 | 18182 | BUSHING, CABLE | 1 | |
| 17 | 18176 | SPRING | 1 | |
| 18 | 18181 | BUSHING, CABLE | 1 | |
| 19 | 18061 | LEVER, CONTROL | 1 | |
| 20 | 492357 | SCREW, HHC 1/4"-20 X 1 | 1 | |
| 21 | 511717 | KEY, WOODRUFF 1/8" X 5/8" | 1 | |
| 22 | 492584 | NUT, NYLOC 1/2"-13 | 1 | |
| 23 | 18177 | SPRING | 1 | |
| 24 | 492583 | NUT, NYLOC 3/8" | 2 | |
| 25 | 492598 | WASHER, FLAT 3/8" | 2 | |
| 26 | 491723 | PIN, STEERING SHAFT | 1 | |
| 27 | 18238 | BEARING, STEERING SHAFT | 1 | |
| 28 | 512186 | PIN, STEERING SHAFT | 1 | |
| 29 | 513360 | STEERING COLUMN | 1 | |
| 30 | 803151 | STOP, STEERING | 1 | |
| 31 | 512200 | BUSHING, BRONZE | 2 | |
| 32 | 8115 | NUT LUG | 8 | |
| 33 | 3469 | CAP, DUST | 2 | |
| 34 | 18049 | WHEEL, STEERING ASSY. REAR..... | 2..... | PNEUMATIC TIRE |
| 34A | 18049F | WHEEL, STEERING ASSY. REAR..... | 2..... | FOAM FILLED TIRE |
| 35 | 512210 | NUT, CASTLE | 2 | |
| 36 | 491688 | PIN, COTTER 1/8" X 1-1/2" | 2 | |
| 37 | EM501299 | WASHER, REAR WHEEL HUB | 4 | |
| 38 | 511159 | WASHER, FLAT 1" | 2 | |
| 39# | EM903113 | BEARING CONE | 4 | |
| 40# | EM903012 | BEARING CUP | 4 | |
| 41# | EM914288 | SEAL | 2 | |
| 42 | EM941306 | HUB, REAR WHEEL..... | 2..... | INCLUDES ITEMS W/# |

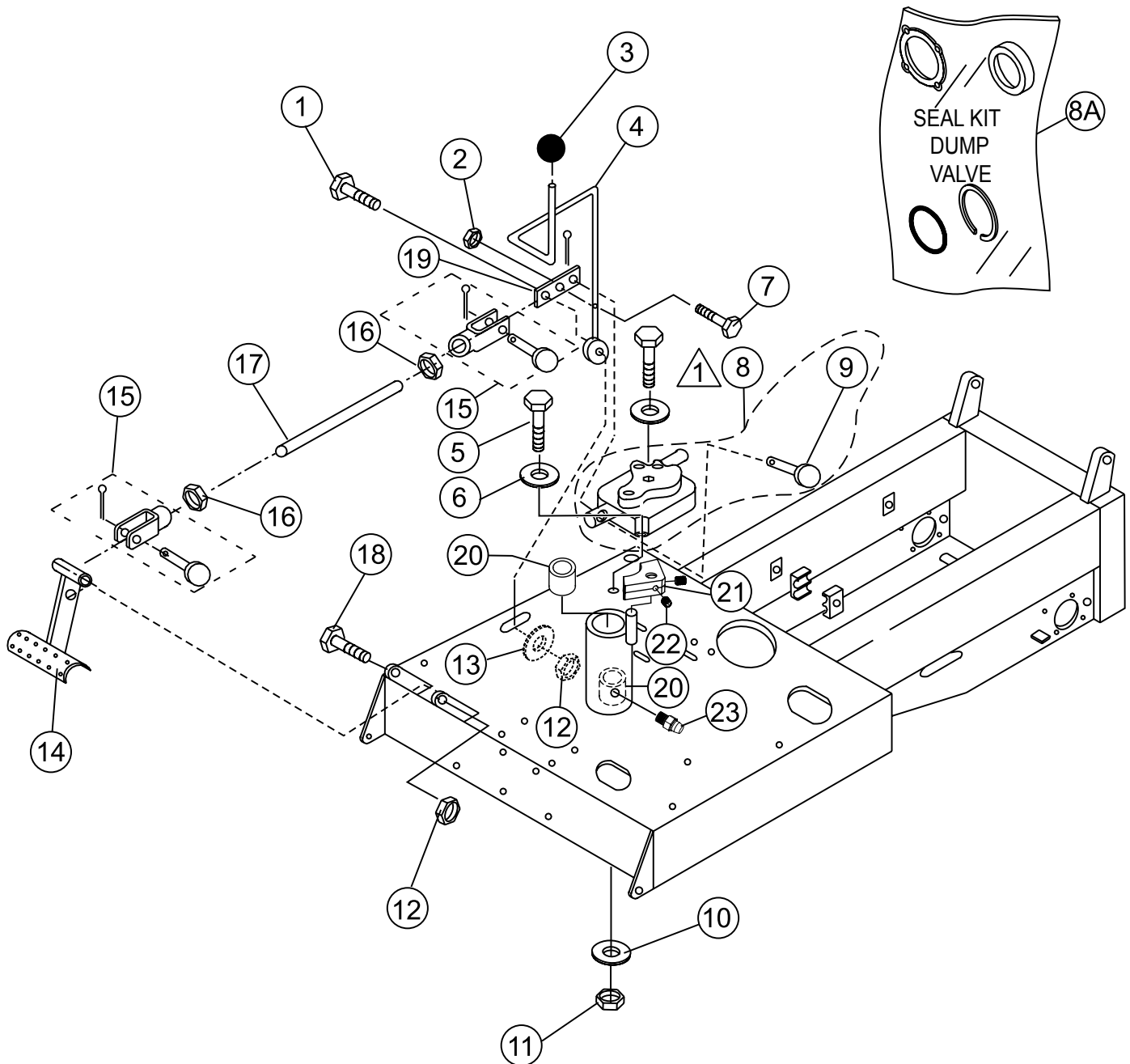
CHASSIS ASSY.



CHASSIS ASSY.

| <u>NO.</u> | <u>PART NO.</u> | <u>PART NAME</u> | <u>QTY.</u> | <u>REMARKS</u> |
|------------|-----------------|-------------------------------------|-------------|---|
| 1 | EM969013 | NUT, NYLOC 3/8" | 10 | |
| 2 | 3019092 | WASHER, FLAT 3/8" | 18 | |
| 3 | 492313 | SCREW, HHC 3/8"-16 X 1-1/2" | 3 | |
| 4 | 503112 | SCREW, HHC 3/8"-16 X 2-3/4" | 4 | |
| 5 | EM963610 | CAP SCREW 3/8" X 1-1/4" NC GRD 8 | 2 | |
| 6 | 492356 | SCREW, HHC 1/4" X 3/4" NC GRD 5 | 2 | |
| 7 | 2101402 | WASHER, LOCK 1/4" | 2 | |
| 8 | 512196 | BRACKET, HYD. PUMP MOUNTING | 1 | WITH EATON PUMP |
| 9 | 18146 | MOUNT, OIL FILTER | 1 | WITH EATON PUMP |
| 9 | 808775 | MOUNT, OIL FILTER | 1 | WITH HYDRO-GEAR PUMP |
| 10 | 505069 | NUT, NYLOC 3/4"-10 | 1 | |
| 11 | 18198 | ROD, TUB PROP (WBH16/WBH16E/WBH16F) | 1 | |
| 11 | 18198 | ROD, TUB PROP (WBH16EF) | 1 | S/N 1P01 AND BELOW USED UP TO JAN. 31, 2023 |
| 11 | 809510 | ROD, TUB PROP (WBH16EF) | 1 | S/N 1P02 AND ABOVE EFFECTIVE FEB. 2023 |
| 12 | 505976 | CLAMP, BRACKET | 2 | |
| 13 | 506185 | CLAMP, BRACKET | 2 | |
| 14 | 492623 | WASHER, LOCK 5/16" | 5 | |
| 15 | 492366 | SCREW, HHC 5/16"-18 X 1-1/2" | 2 | |
| 16 | 18047 | CHASSIS (WBH16/WBH16E/WBH16F) | 1 | |
| 16 | 18047 | CHASSIS (WBH16EF) | 1 | S/N 1P01 AND BELOW USED UP TO JAN. 31, 2023 |
| 16 | 522416 | CHASSIS (WBH16EF) | 1 | S/N 1P02 ~ S/N 1P07 EFFECTIVE FEB. ~ JUNE 2023 |
| 16 | 808772 | CHASSIS (WBH16EF | 1 | S/N 1P07 AND ABOVE EFFECTIVE JULY 2023 |
| 18 | 492586 | NUT, NYLOC 5/8"-11 | 2 | |
| 19 | 492597 | WASHER, FLAT 9.5 X 22.2 | 3 | |
| 20 | 18162 | PANEL, REAR WHEEL COVER | 1 | |
| 21 | 18222 | PLATFORM, OPERATOR | 1 | |
| 22 | 492313 | SCREW, HHC 3/8"-16 X 1-1/2" | 1 | |
| 23 | 492406 | SCREW, HHC 5/8"-11 X 1-1/2" | 2 | |
| 24 | 492363 | SCREW, HHC 5/16"-18 X 3/4" | 3 | |
| 27 | 2105164 | NUT, 5/16" | 3 | REPLACES P/N 492553 |
| 28 | 18173 | LATCH, PLATFORM | 1 | |
| 29 | 522073 | HOUR METER | 1 | |
| 30 | 522106 | SOCKET HEAD SCREW, 5-40 X 1/2" | 2 | |
| 31 | 513122 | NUT, 1/8" NC | 2 | |

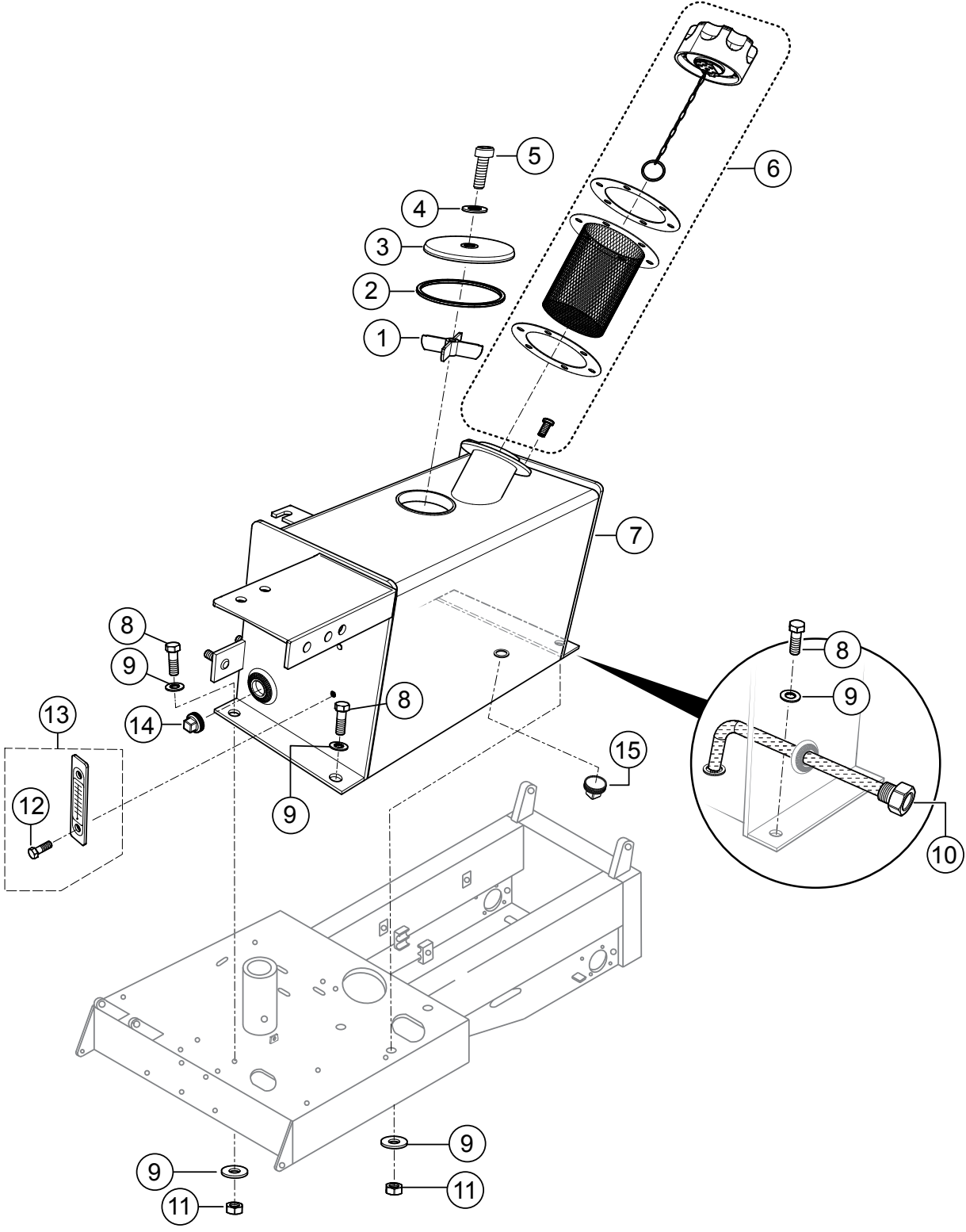
HANDLE/FOOT DUMP CONTROLS ASSY.



△ 1 REFERENCE HYDRAULIC
DUMP ASSY.

HANDLE/FOOT DUMP CONTROLS ASSY.

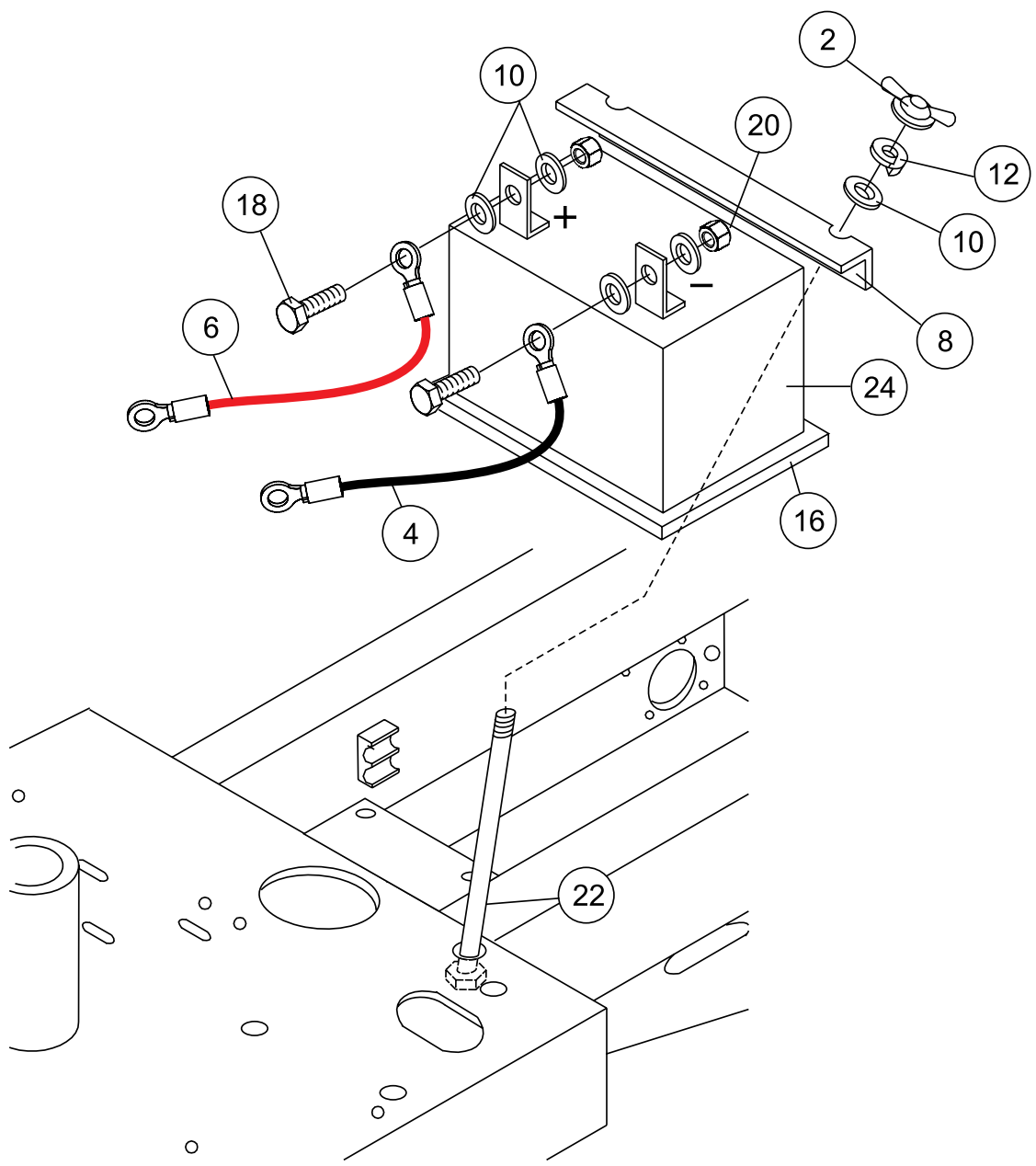
| <u>NO.</u> | <u>PART NO.</u> | <u>PART NAME</u> | <u>QTY.</u> | <u>REMARKS</u> |
|------------|-----------------|------------------------------|-------------|---------------------|
| 1 | 492401 | SCREW, HHC 1/2"-13 X 4 | 1 | |
| 2 | 503119 | NUT, NYLOC 3/16" | 1 | |
| 3 | 18121 | KNOB, LEVER | 1 | |
| 4 | 18065 | LEVER, DUMP VALVE | 1 | |
| 5 | 512185 | SCREW, HHC 1/4"-20 X 1-3/4" | 2 | |
| 6 | 492622 | WASHER, FLAT 1/4" | 4 | |
| 7 | 512183 | SCREW, HHC 3/16"-24 X 1-1/4" | 1 | |
| 8 | 18064 | VALVE, DUMP | 1 | INCLUDES ITEMS W/\$ |
| 8A | 18064SK | SEAL KIT, DUMP VALVE | 1 | |
| 9\$ | | PIN, DUMP VALVE CROSS..... | 1 | NOT SOLD SEPARATELY |
| 10 | 492596 | WASHER, FLAT 1/4" | 1 | |
| 11 | 492581 | NUT, NYLOC 1/4"-20 | 1 | |
| 12 | 492584 | NUT, NYLOC 1/2"-13 | 2 | |
| 13 | 492600 | WASHER, FLAT 1/2" | 1 | |
| 14 | 18152 | PEDAL, DUMP VALVE | 1 | |
| 15 | 18123 | CLEVIS ASSY., DUMP VALVE | 2 | |
| 16 | 492574 | NUT, HEX 3/8" | 2 | |
| 17 | 18153 | ROD, DUMP VALVE | 1 | |
| 18 | 492400 | SCREW, HHC 1/2"-13 X 3-1/2" | 1 | |
| 19 | 18122 | BELL CRANK, DUMP VALVE | 1 | |
| 20 | 512200 | BUSHING, BRONZE | 2 | |
| 21 | 803151 | STOP, STEERING | 1 | |
| 22 | 492467 | SET SCREW, 5/16" X 3/8" NC | 2 | |
| 23 | 503901 | ZERK FITTING 1/4"-28 | 1 | |



HYDRAULIC OIL TANK ASSY.

| <u>NO.</u> | <u>PART NO.</u> | <u>PART NAME</u> | <u>QTY.</u> | <u>REMARKS</u> |
|------------|-----------------|---------------------------------|-------------|----------------------------|
| 1 | 520461 | RETAINER | 1 | |
| 2 | 801791 | O-RING | 1 | |
| 3 | 520460 | COVER | 1 | |
| 4 | 520343 | O-RING | 1 | |
| 5 | 510717 | BOLT, 1/2" X 1-3/4" NC | 1 | |
| 6 | EM16477 | CAP, HYDRAULIC OIL TANK | 1 | |
| 7 | 18125 | TANK, HYDRAULIC OIL | 1..... | WBH16, WBH16E, WBH16F |
| 7 | 18125 | TANK, HYDRAULIC OIL | 1..... | WBH16EF S/N 1P06 AND BELOW |
| 7 | 808773 | TANK, HYDRAULIC OIL | 1..... | WBH16EF S/N 1P07 AND ABOVE |
| | | | | EFFECTIVE JULY 2023 |
| 8 | 492376 | SCREW, HHC 3/8" X 1-1/4" | 3 | |
| 9 | 492598 | WASHER, FLAT 3/8" | 6 | |
| 10 | 18229 | SCREEN, OIL RESERVOIR | 1 | |
| 11 | 492583 | NUT, NYLOC 3/8"-16 | 3 | |
| 12% | | SCREW, | 2..... | NOT SOLD SEPARATELY |
| 13 | 18052 | SIGHT GAUGE, HYD. OIL TANK..... | 1..... | INCLUDES ITEMS W/% |
| 14 | 491213 | PLUG, HYD. OIL TANK 3/4"-14 NPT | 1 | |
| 15 | 506094 | PLUG, HYD. OIL TANK 1/2" NPT | 1 | |

BATTERY ASSY.



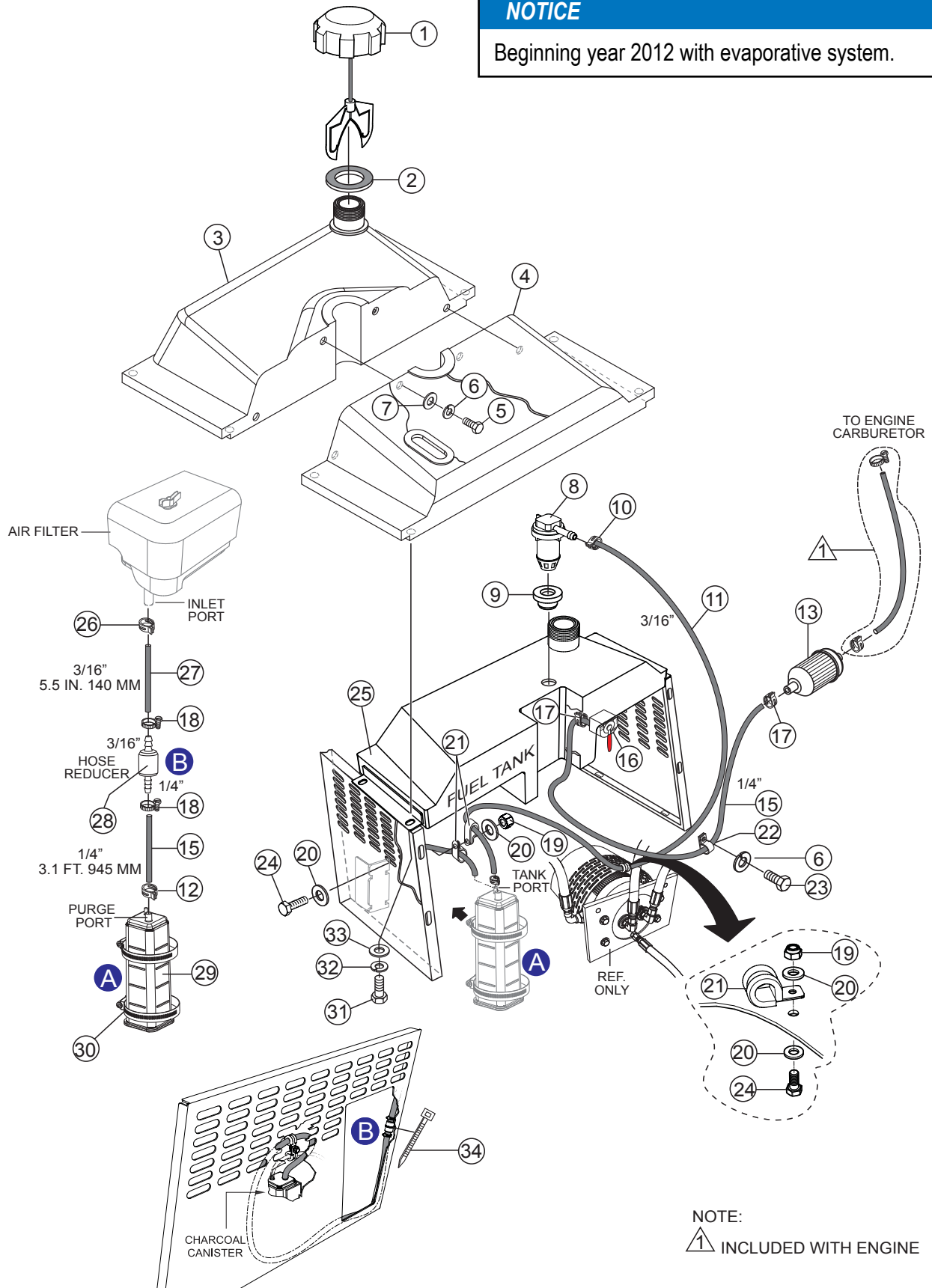
BATTERY ASSY.

| <u>NO.</u> | <u>PART NO.</u> | <u>PART NAME</u> | <u>QTY.</u> | <u>REMARKS</u> |
|------------|-----------------|--------------------------|-------------|---------------------|
| 2 | 505500 | WING NUT | 2 | |
| 4 | 512557 | BATTERY CABLE, NEGATIVE | 1 | |
| 6 | 511250 | BATTERY CABLE, POSITIVE | 1 | |
| 8 | 512555 | BATTERY SUPPORT BRACKET | 1 | |
| 10 | EM92305 | WASHER, FLAT 1/4"..... | 6..... | REPLACES P/N 492596 |
| 12 | 2101402 | WASHER, LOCK 1/4" | 2..... | REPLACES P/N 492622 |
| 16 | 508480 | BATTERY SUPPORT PLATFORM | 1 | |
| 18 | 492357 | BOLT, 3/16" X 1" | 2 | |
| 20 | 503119 | NUT, 3/16" | 2 | |
| 22 | 512585 | SUPPORT BRACKET BOLT | 2 | |
| 24 | 4671 | BATTERY | 1 | |

FUEL TANK ASSY. (STEEL)

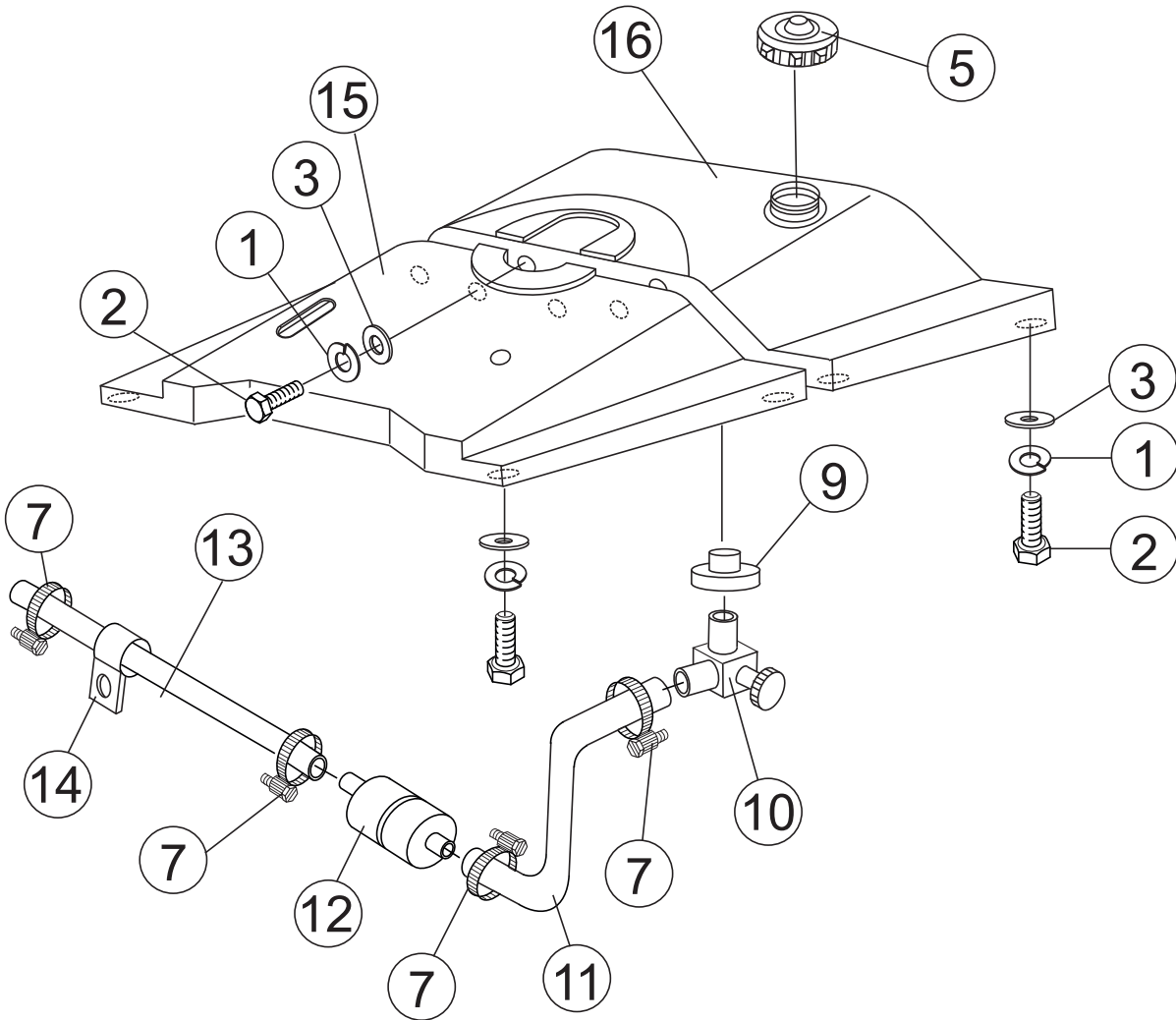
NOTICE

Beginning year 2012 with evaporative system.



FUEL TANK ASSY. (STEEL)

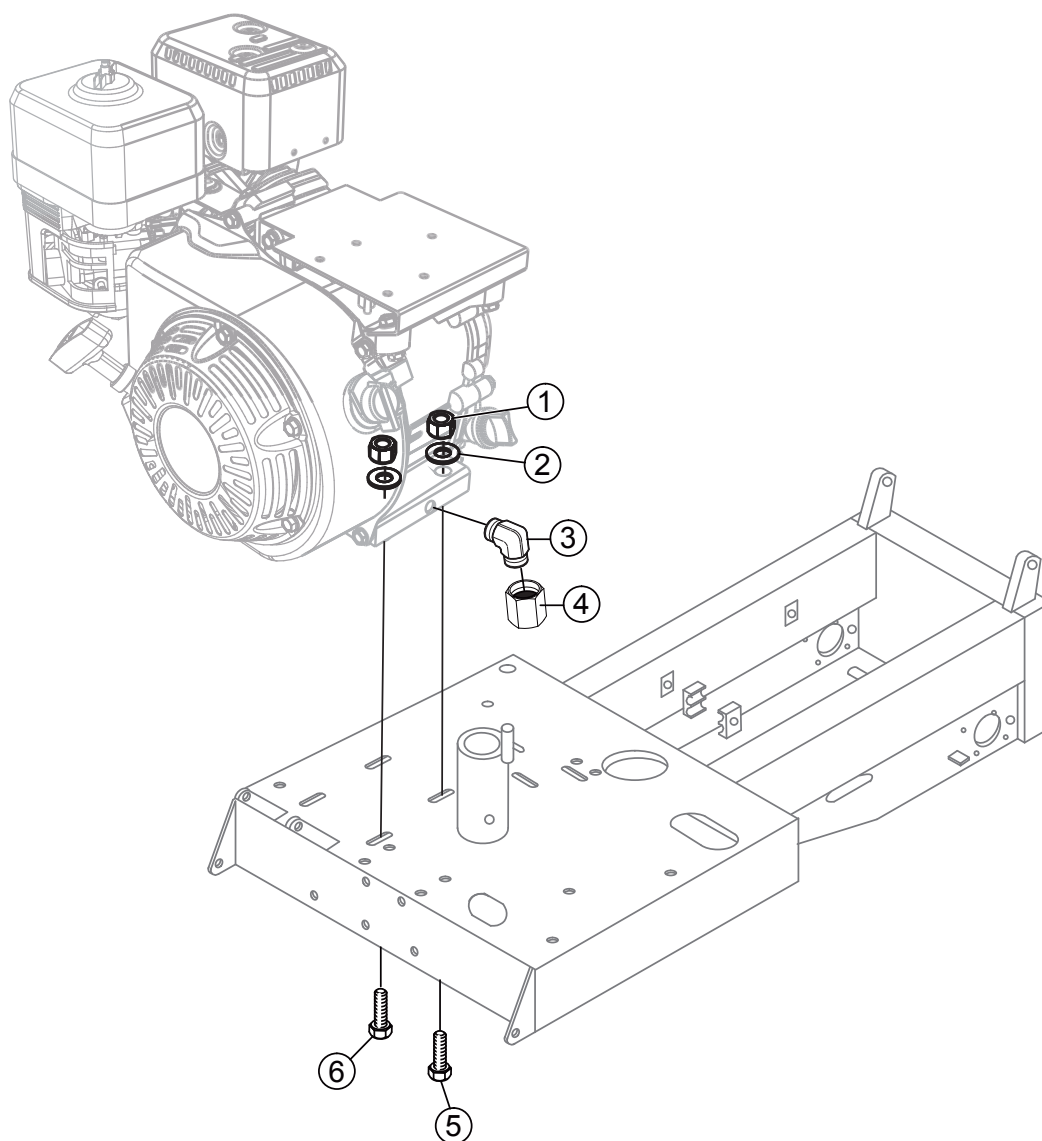
| <u>NO.</u> | <u>PART NO.</u> | <u>PART NAME</u> | <u>QTY.</u> | <u>REMARKS</u> |
|------------|-----------------|---|-------------|---------------------|
| 1 | 520820 | CAP, FUEL (EPA) 2" DIA. | 1 | |
| 2 | 802006 | FUEL TANK NECK SEAL | 1 | |
| 3 | 800845 | COVER, FUEL TANK, FRONT, PLASTIC | 1 | |
| 4 | 521392 | COVER, FUEL TANK, REAR, PLASTIC | 1 | |
| 5 | 492356 | SCREW, 1/4" X 3/4" GRD 5 | 4 | |
| 6 | 492622 | WASHER, LOCK 1/4" | 4 | |
| 7 | 509161 | WASHER, FLAT 5/16" | 4 | |
| 8 | 202772 | VENT VALVE, EPA | 1 | |
| 9 | 203403 | GROMMET, VENT VALVE | 1 | |
| 10 | 802498 | TENSION CLAMP | 1 | |
| 11 | 60004 | HOSE, FUEL, Ø.1875, LOW PERM 50PSI 41" | 1 | |
| 12 | 802573 | TENSION CLAMP | 1 | |
| 13 | EM20763 | FILTER, IN-LINE FUEL | 1 | |
| 15 | 520611 | HOSE, FUEL, 1/4" EPA (3.1 FT.) | 4 | 1PC=1FT |
| 16 | 22081 | VALVE, FUEL SHUT-OFF | 1 | |
| 17 | 802574 | TENSION CLAMP | 1 | |
| 18 | 506208 | CLAMP, FUEL HOSE | 3 | |
| 19 | 492581 | NUT, NYLOC 1/4" | 2 | |
| 20 | 492595 | WASHER, FLAT 1/4" | 2 | |
| 21 | 801130 | CLAMP, RUBBER COATED | 3 | |
| 22 | 511807 | CLAMP NYLON 5/8" | 1 | |
| 23 | 492355 | SCREW, 1/4" NC X 1/2" GRD 5 | 1 | |
| 24 | 800056 | BOLT, HHCC 1/4" NC X 3/4" GRD 5 | 2 | |
| 25 | 800841 | TANK, FUEL, STEEL | 1 | |
| 26 | 802498 | TENSION CLAMP | 3 | |
| 27 | 520833 | HOSE, AIR FILTER 3/16" (5.5") EPA | 1 | 1PC=1FT |
| 28 | 802405 | HOSE REDUCER, 1/4" TO 3/16" | 1 | |
| 29 | 23505 | CANISTER, CHARCOAL, 390CC (EPA) | 1 | |
| 30 | 510725 | CLAMP | 2 | |
| 31 | 492363 | SCREW, 5/16" X 3/4" GRD 5 | 6 | |
| 32 | EM923343 | WASHER, LOCK 5/16" | 8 | REPLACES P/N 492623 |
| 33 | EM923023 | WASHER, FLAT 5/16" | 8 | REPLACES P/N 492597 |
| 34 | 491030 | PLASTIC TIE WRAP | 1 | |



FUEL TANK ASSY. (PLASTIC)

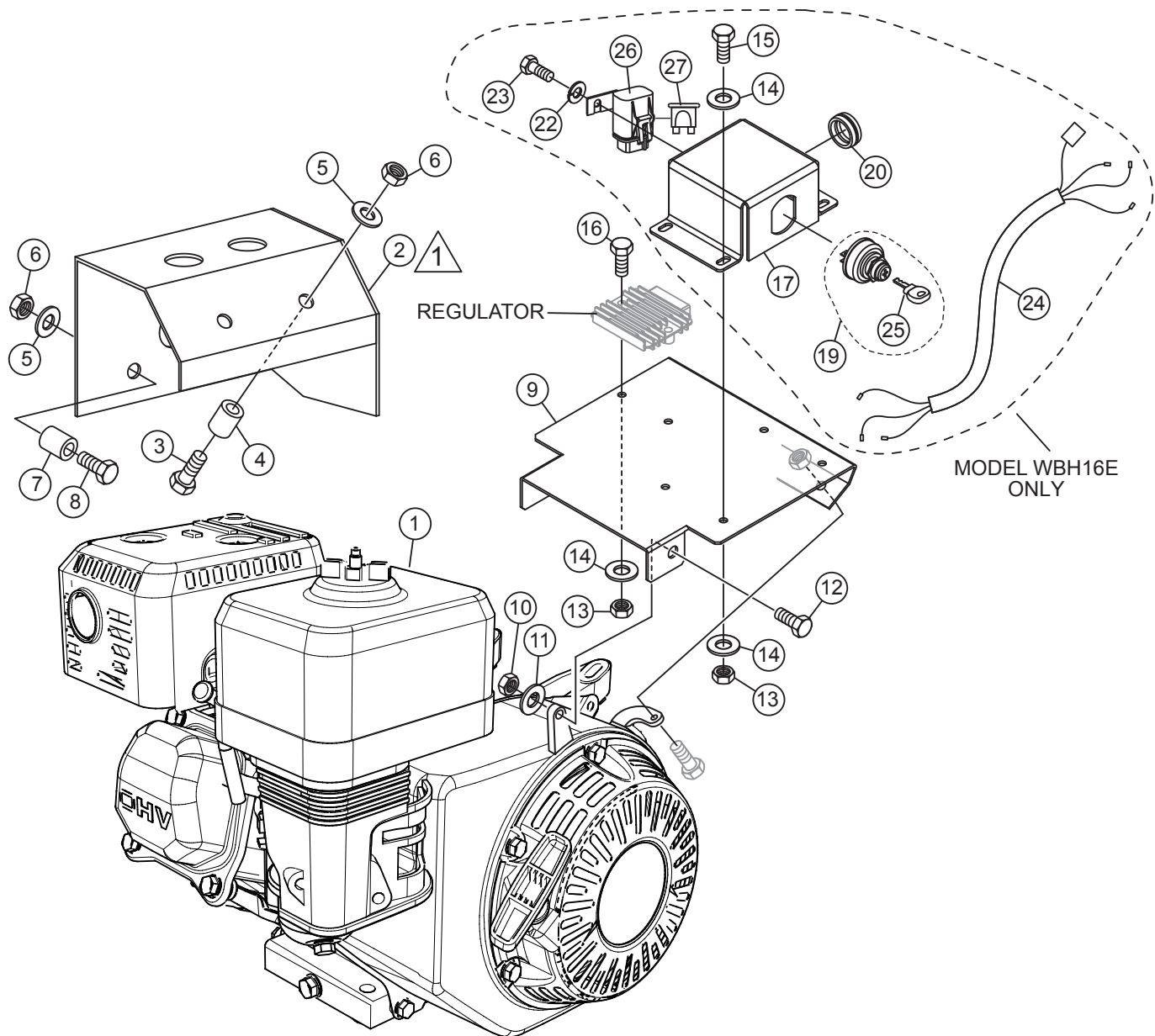
| <u>NO.</u> | <u>PART NO.</u> | <u>PART NAME</u> | <u>QTY.</u> | <u>REMARKS</u> |
|------------|-----------------|----------------------------|-------------|----------------|
| 1 | EM923343 | WASHER, LOCK 5/16" | 4 | |
| 2 | EM492299 | SCREW, HHC 5/16"-18 X 1/2" | 4 | |
| 3 | EM923023 | WASHER, FLAT 5/16" | 4 | |
| 5 | 18166 | CAP, FUEL 4" DIA. | 1 | |
| 7 | 506208 | CLAMP, FUEL HOSE | 4 | |
| 9 | 19633 | SEAL, FUEL TANK GROMMET | 1 | |
| 10 | 20795 | VALVE, FUEL SHUT-OFF | 1 | |
| 11 | 512192 | HOSE, FUEL | 1 | |
| 12 | EM20763 | FILTER, FUEL | 2 | |
| 13 | 512191 | HOSE, FUEL | 1 | |
| 14 | 511807 | STRAP, NYLON 5/8" | 1 | |
| 15 | 18103 | COVER, FUEL TANK | 1 | |
| 16 | 18098 | TANK, PLASTIC FUEL | 1 | |

ENGINE MOUNTING ASSY.



ENGINE MOUNTING ASSY.

| <u>NO.</u> | <u>PART NO.</u> | <u>PART NAME</u> | <u>QTY.</u> | <u>REMARKS</u> |
|------------|-----------------|---------------------------------|-------------|---------------------|
| 1 | 2105164 | NUT, NYLOC 5/16" | 4..... | REPLACES P/N 492582 |
| 2 | 505679 | WASHER, FLAT 3/8" | 4 | |
| 3 | 513593 | 90° FITTING | 1 | |
| 4 | 513594 | ADAPTER PLUG | 1 | |
| 5 | 492368 | SCREW, 5/16" NC X 2" GRD 5..... | 1..... | GROUND CONNECTION |
| 6 | 492367 | SCREW, 5/16" NC X 1-3/4" GRD 5 | 3 | |



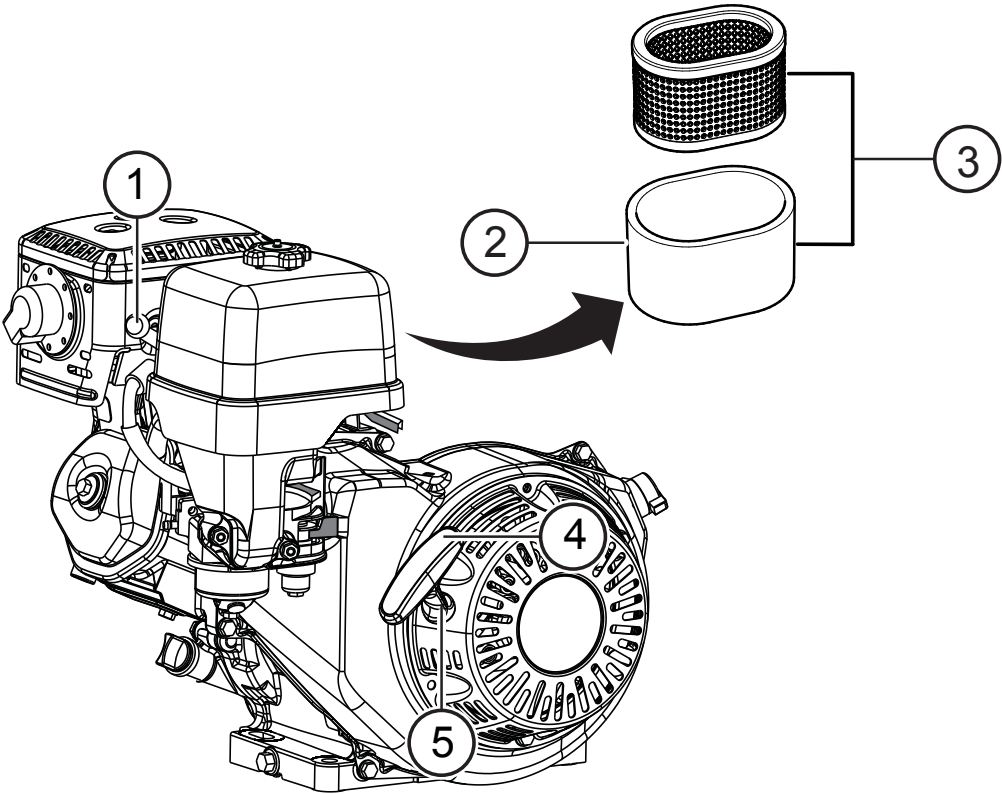
NOTES:



MUFFLER GUARD AND ASSOCIATED HARDWARE ARE NO LONGER AVAILABLE. REF. PANEL ASSY., ITEM 15 FOR REPLACEMENT MUFFLER GUARD.

ENGINE ASSY.

| <u>NO.</u> | <u>PART NO.</u> | <u>PART NAME</u> | <u>QTY.</u> | <u>REMARKS</u> |
|------------|-----------------|---|-------------|-----------------------------------|
| 1 | 520767 | ENGINE, HONDA 11 HP RECOIL START | 1..... | WBH16/WBH16F ONLY |
| 1 | 520766 | ENGINE, HONDA 11 HP ELECTRIC START..... | 1..... | WBH16E/WBH16EF ONLY |
| 2 | 801029 | GUARD, MUFFLER | 1..... | NO LONGER AVAILABLE |
| 3 | 503118 | BOLT, 3/16" X 1" NC GRD 2 | 2 | |
| 4 | 512512 | SPACER | 2 | |
| 5 | 492595 | WASHER, FLAT 3/16" | 4 | |
| 6 | 503119 | NUT, 3/16" NC | 4 | |
| 7 | 512507 | SPACER | 2 | |
| 8 | 508998 | BOLT, 3/16" X 1-1/2" NC | 2 | |
| 9 | 18007 | MOTOR COVER | 1 | |
| 10 | 492583 | NUT, 3/8" NC | 2 | |
| 11 | 492598 | WASHER 3/8" | 2 | |
| 12 | EM963057 | CAP SCREW 3/8" X 1-1/2" | 2..... | REPLACES P/N 492313 |
| 13 | 492581 | NUT, 1/4" NC | 6 | |
| 14 | 492596 | WASHER, FLAT 1/4" | 10..... | WBH16E ONLY |
| 15 | 492356 | BOLT, 1/4" X 3/4" NC GRD 5 | 4..... | WBH16E ONLY |
| 16 | EM492358 | BOLT, 1/4" X 1-1/4" NC GRD 5 | 2 | |
| 17 | 801019 | IGNITION SWITCH BOX | 1..... | WBH16E ONLY |
| 19 | 10958 | IGNITION SWITCH..... | 1..... | INCLUDES ITEMS W/# WBH16E ONLY |
| 20 | 800921 | GROMMET | 1..... | WBH16E ONLY |
| 22 | 492621 | WASHER, LOCK 3/16" | 1..... | WBH16E ONLY |
| 23 | EM503115 | SCREW..... | 1..... | WBH16E ONLY |
| 24 | 801014 | ELECTRICAL HARNESS..... | 1..... | WBH16E ONLY |
| 25# | 11078 | KEY, IGNITION SWITCH | 1..... | WBH16E ONLY |
| 26 | EM98066 | FUSE HOLDER | 1..... | WBH16E ONLY |
| 27 | EM98287 | FUSE, 25 AMP | 1..... | WBH16E ONLY |



ENGINE SERVICE PARTS

| <u>NO.</u> | <u>PART NO.</u> | <u>PART NAME</u> | <u>QTY.</u> | <u>REMARKS</u> |
|------------|-----------------|--------------------------------|-------------|--------------------|
| 1 | 9807955846 | SPARK PLUG | 1 | |
| 2# | 17218ZE3505 | AIR FILTER, OUTER | 1 | |
| 3 | 17210ZE3505 | AIR FILTER, ELEM. (DUAL) | 1..... | INCLUDES ITEMS W/# |
| 4 | 28461Z5T305 | GRIP, RECOIL STARTER | 1 | |
| 5 | 28400Z5T003ZA | ROPE, RECOIL STARTER (RED) | 1 | |
| 5 | 28400Z5T305ZB | ROPE, RECOIL STARTER (BLACK) | 1 | |

PARTS MANUAL

HERE'S HOW TO GET HELP

PLEASE HAVE THE MODEL AND SERIAL
NUMBER ON-HAND WHEN CALLING

UNITED STATES

Multiquip Inc.

(310) 537- 3700
6141 Katella Avenue Suite 200
Cypress, CA 90630
E-MAIL: mq@multiquip.com
WEBSITE: www.multiquip.com

CANADA

Multiquip

(450) 625-2244
4110 Industriel Boul.
Laval, Quebec, Canada H7L 6V3
E-MAIL: infocanada@multiquip.com

UNITED KINGDOM

Multiquip (UK) Limited Head Office

0161 339 2223
Unit 2, Northpoint Industrial Estate, Globe Lane,
Dukinfield, Cheshire SK16 4UJ
E-MAIL: sales@multiquip.co.uk

© COPYRIGHT 2024, MULTIQUIP INC.

Multiquip Inc, the MQ logo are registered trademarks of Multiquip Inc. and may not be used, reproduced, or altered without written permission. All other trademarks are the property of their respective owners and used with permission.

This manual MUST accompany the equipment at all times. This manual is considered a permanent part of the equipment and should remain with the unit if resold.

The information and specifications included in this publication were in effect at the time of approval for printing. Illustrations, descriptions, references and technical data contained in this manual are for guidance only and may not be considered as binding. Multiquip Inc. reserves the right to discontinue or change specifications, design or the information published in this publication at any time without notice and without incurring any obligations.

